

SYMPHONY NO. 2

Walter Ross
1994

Bass

BASS

Andante cantabile $\text{♩} = 60$

I

$\text{♩} = 36 (\text{♩} = 108)$

4 5 5 10 10 20 1

pp *mp* *p* *sempre*

25 30 *mf* 35 *mp* *p* 40 *mf* *f* *ff* 45 *pizz.* *mf* *p* *mp* *a tempo* *arco* 65 *f* *ff* *f* *rit.* *p* *niente*

Tempo 1^o $\text{♩} = 60$ 60 3 *rit.* *a tempo* *arco* 65 *f* *ff* *f* *rit.* *p* *niente*

II

Allegro capriccioso $\text{♩} = 84 (\text{in } 1)$

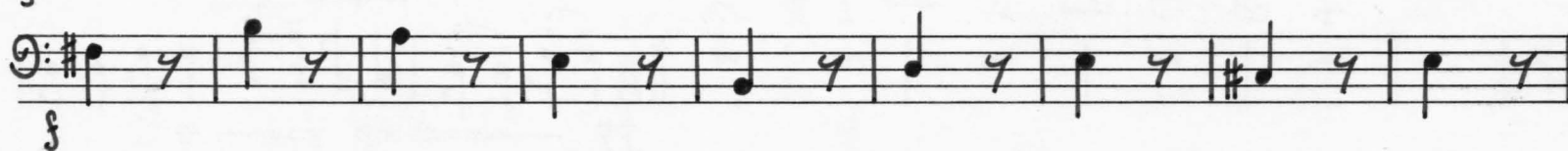
9 10 2 2 3 3 20 8

mf *f*

2.

pizz.

30



40

9

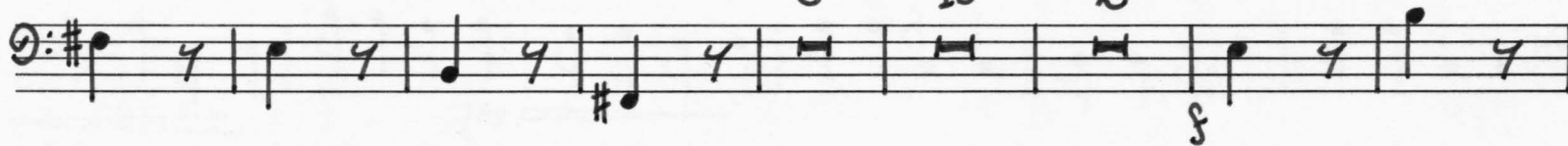
50

10

60

2

pizz.

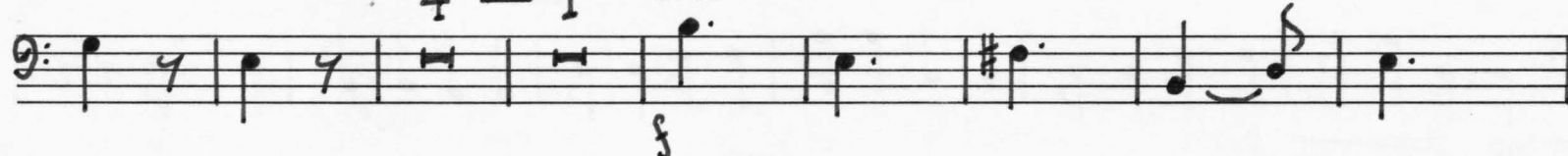


4

70

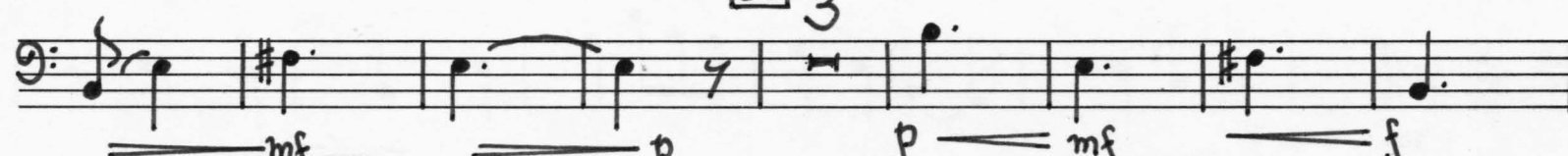
1

arco



80

3



90

9

100

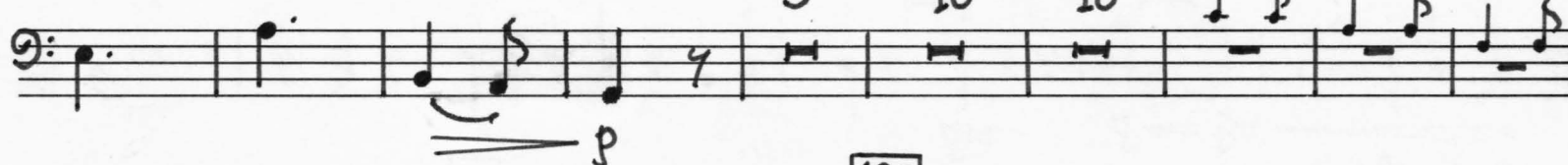
10

110

10

120

cello



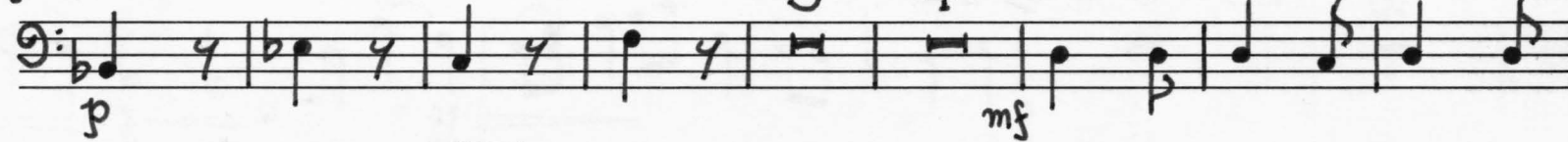
pizz.

130

3

4

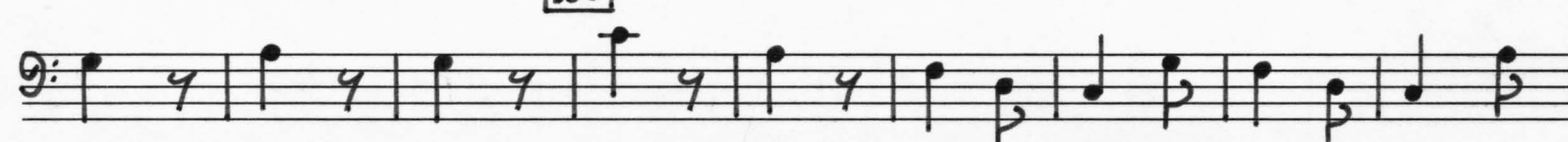
pizz.



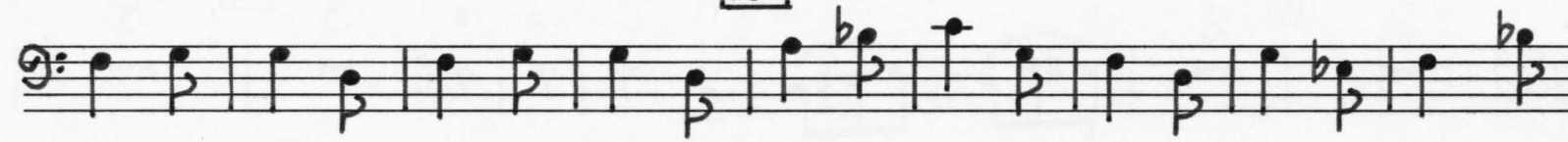
140



150



160



170

3

arco



3 180 10 190 10 200 cello 3

210 220 6 10 230 pizz. 240 arco

250 2 pizz. 260 270 2 10 280 9 arco 290 300 1 pizz. 310 320 330 4 1

f *mf* *p* *pizz.* *arco* *p* *cresc.* *mf* *cresc.* *f* *mf*

arco

4 340 10 350

f

ff

III

Andante grazioso $\text{♩} = 90$

9 10 1

4 20 10

f *mf* *p*

30 1 pizz.

f *mf*

40

6 50 6 rit.

mp *p*

a tempo arco

rit.

60 poco più mosso $\text{d.} = 60$ (in 1)
animato

sempre

p *pp* *mf* *p*

70

80 meno mosso $\text{d.} = 48$

5

f *mf* *p* *mp*

animato $\text{d.} = 60$ (in 1)

3 rit. pizz.

mp *p*

90

2

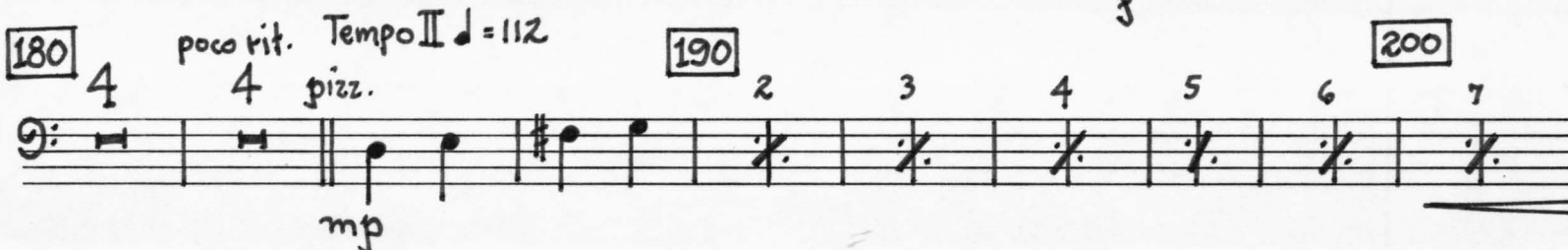
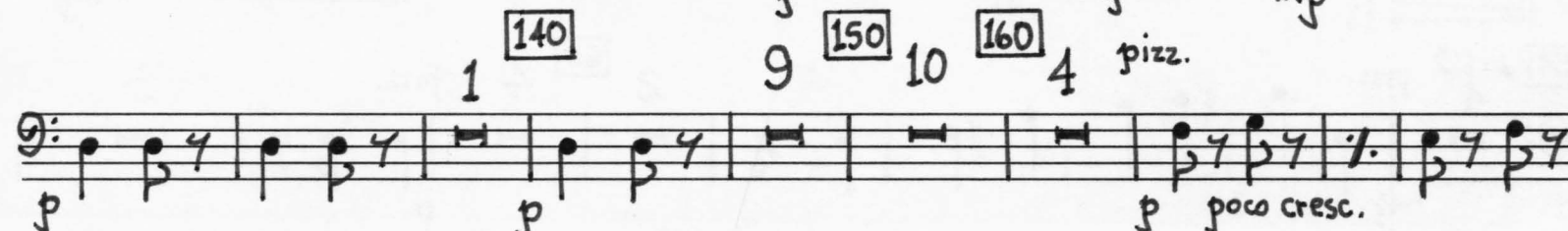
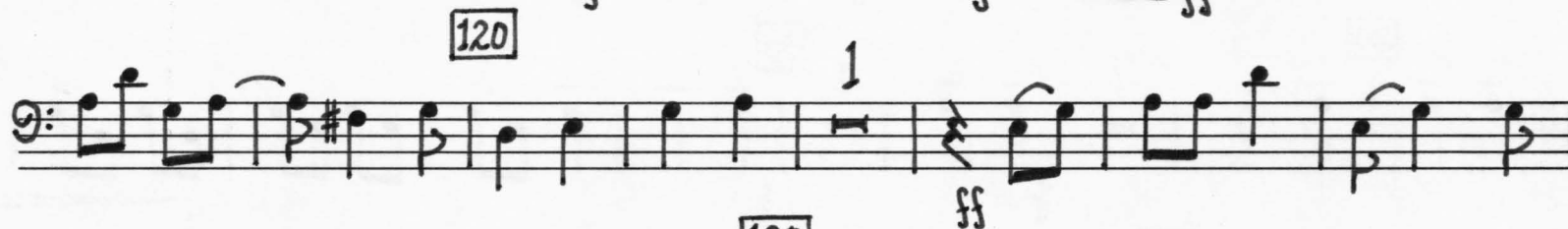
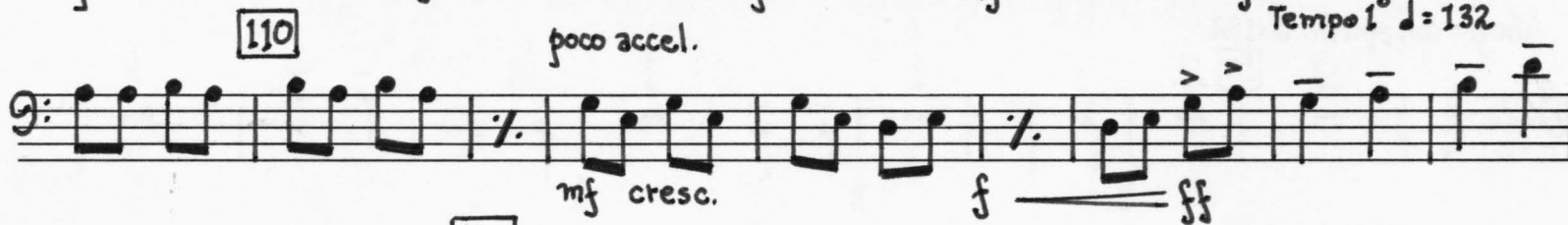
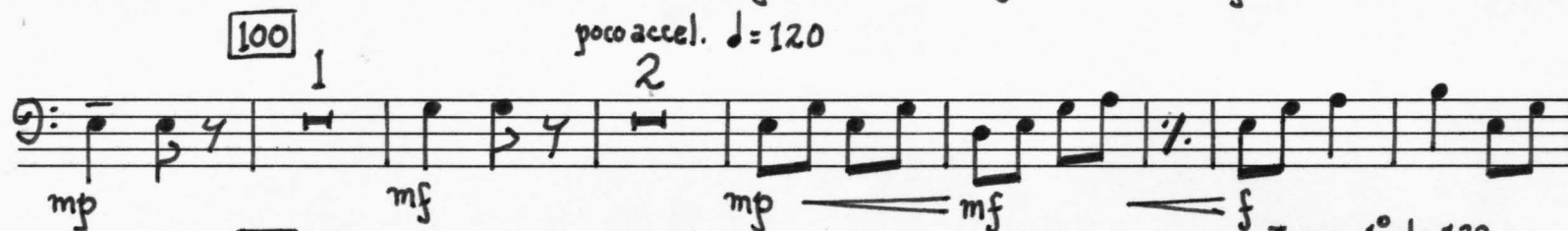
sub. *f*

[100] 1 arco [110] 7 5 rit...
mf p mp p
Tempo 1° ♩ = 90
[120] Andante grazioso [130] 5 [140] 10 rit.
[150] ♩ = 72 meno ♩ = 60 3 [160] 9

IV

Allegro con spirito ♩ = 132
[10] 2 1 1 1
[20] 7 1 [30] 1
[40] 5 5 poco rit... mf
[50] ♩ = 112 pizz. 2 [60] 4 pizz. 5
mf p

6.

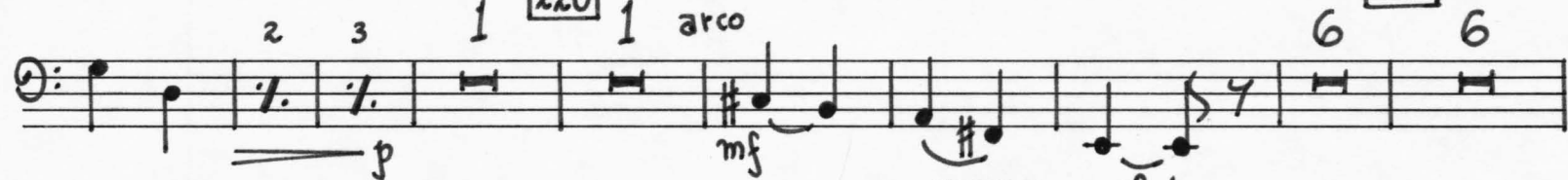


210

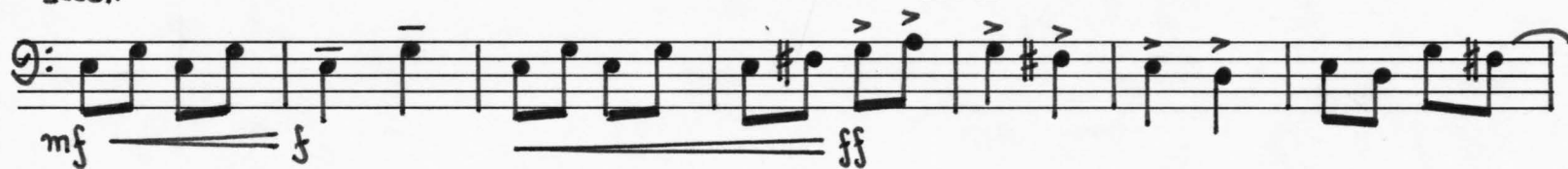


220

230



accel.

240 Tempo 1^o ♩ = 132

250



260

