

# OVERTURE TO THE VIRGINIAN VOYAGE

Flute 1

WALTER ROSS

Flute I

OVERTURE TO THE VIRGINIAN VOYAGE

Walter Ross

Festivo  $\text{♩} = 108$

9 10 10 20 1 A horns tuba 9 30 4 Violins 6 40 1 CL. BSSN. HORN

mf

50 B

60 1 mf

70

1 mf

80 2 C 8 90 10 100 6 D strings 110 10 120 4 Violins bp. bp.

E Animato  $\text{♩} = 108$  (i'istesso tempo)

140 8 150 3 F

160 170 3 1

2.

Fl. 1

1 **G**

**f** **180** **190** **200**

**f** **210** **H** **4** **4** **mf**

**220** **1** **3** **f** **230** **5** **10** **240** **7** **I** **trps.** **3** **250** **9** **260** **f** **6**

**270** **f** **J** **280** **3** **7** **mf** **290**

**300** **p** **mf**

Detailed description of the musical score: The score is for a single flute part, Fl. 1. It begins at measure 180 with a treble clef and a key signature of one sharp (F#). The music is written in 4/4 time. The notation includes eighth and sixteenth notes, often beamed together, and some slurs. Dynamic markings include **f** (forte), **mf** (mezzo-forte), and **p** (piano). Measure numbers are boxed and placed above the staff: 180, 190, 200, 210, 220, 230, 240, 250, 260, 270, 280, 290, and 300. There are also some boxed letters: **G** at the beginning, **H** at measure 210, and **J** at measure 280. Performance instructions include **trps.** (trills) at measure 240 and **I** (first ending) at measure 240. The score ends at measure 300 with a final note and a double bar line.

310



cresc.

ff

330

L strings

340



p

350



Poco accel.

M J. = 120

370

380

390

400

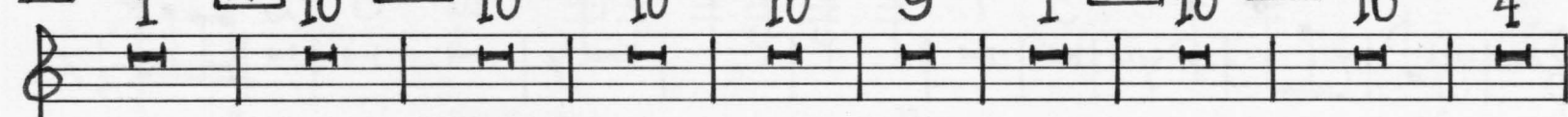
410

N horns

420

430

440



Violins

450

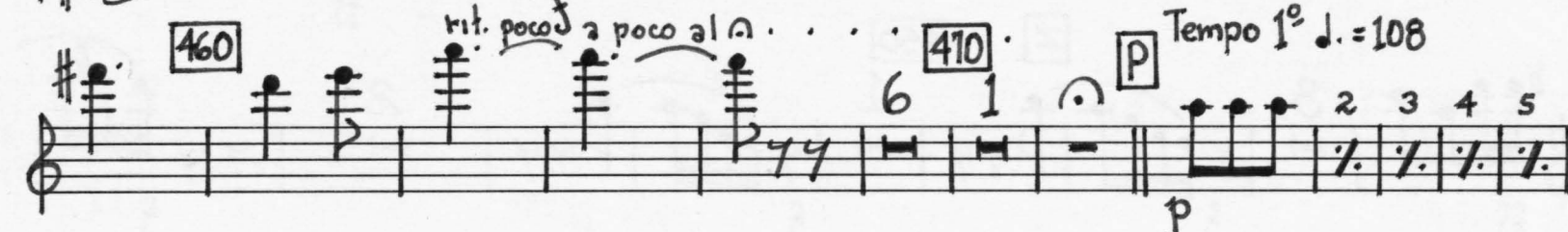
O



rit. poco f

a poco al

470

Tempo 1<sup>o</sup> J. = 108

480

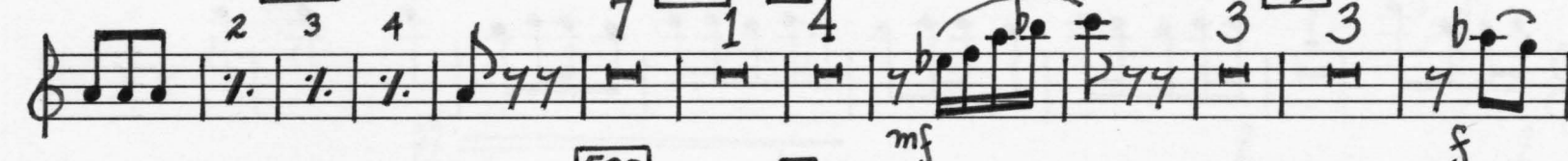


490

500

Q

510



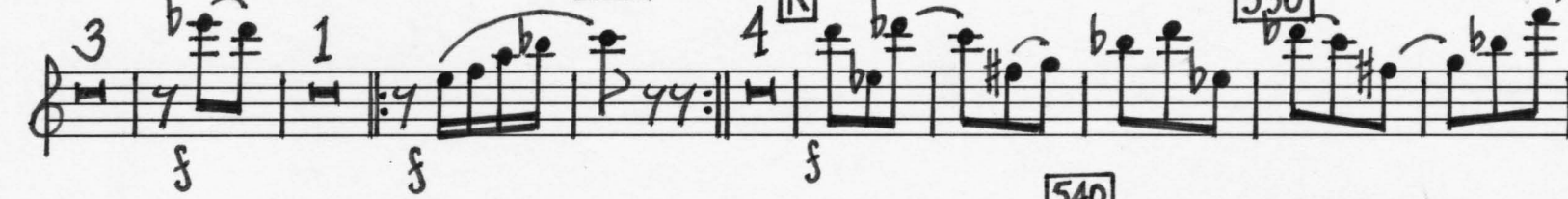
mf

f

520

R

530



540



#### 4. FI.1

Handwritten musical score for a horn part, measures 545-670. The score is written on ten staves in treble clef. It includes various musical notations such as notes, rests, slurs, and dynamic markings (f, ff). Above the staves, there are boxed letters and numbers indicating specific measures or techniques: S (550), T (560), U (570), V (590), W (610), X (630), Y (640), Z (650), and Aa (660). The score concludes with a double bar line at measure 670.

