

**SONATINA
DE
PRIMAVERA**

FOR
FLUTE AND GUITAR

WALTER ROSS

Flute

I
CANTILENA

Lento e sempre libero ♩ = 60

10

pp mp pp mp

mf mp p

20

mf p pp

30

poco più mosso 2 poco rit atempo 3

mf f mf mp mf

40

Tempo 1²

p mf f

50

mf mf

Handwritten musical score on ten staves. The notation includes various musical symbols such as notes, rests, accidentals, and dynamic markings. Performance instructions like "poco accel.", "poco rit.", and "Tempo 12" are present. Boxed numbers 60, 70, and 80 are interspersed throughout the score.

Staff 1: mp

Staff 2: p , p , p

Staff 3: mf , poco accel. , poco rit. , Tempo 12 , p

Staff 4: mp

Staff 5: mf , f

Staff 6: mf

Staff 7: rit. , pp

3 Elegante $\text{♩} = 72$

II
PASTORALE

mp

10

3

f

mp

p

mf

20

poco rit. , a tempo

mp

mf

30

p

f

mp

p

$\text{♩} = \text{♩}$ più mosso $\text{♩} = 108$
giocoso

f

p

f

40

1 50 1 *poco rit. a tempo*

p *mf* *f* *p* *mf* *mp* *mf*

60 70 80 90

Tempo $\text{♩} = 72$

100



4



110

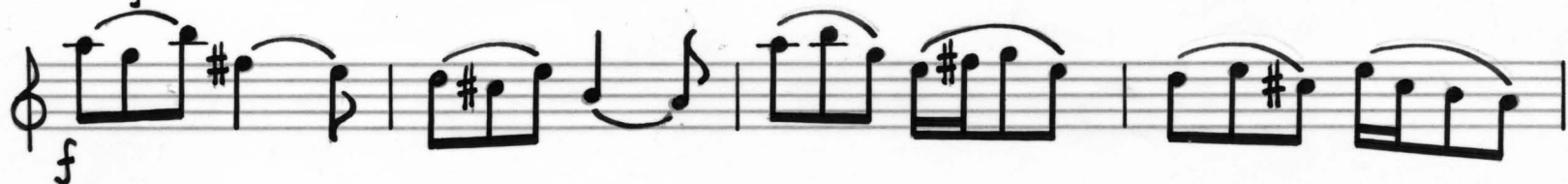
3



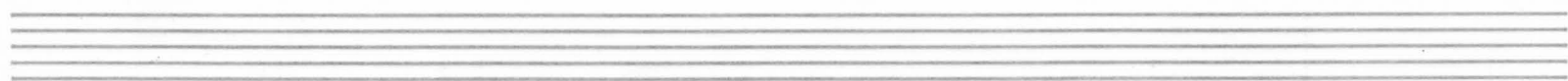
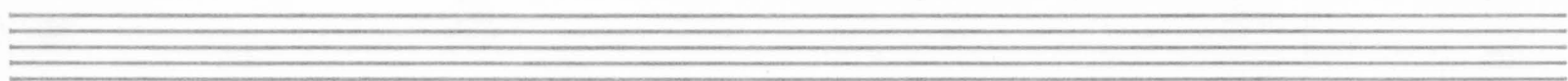
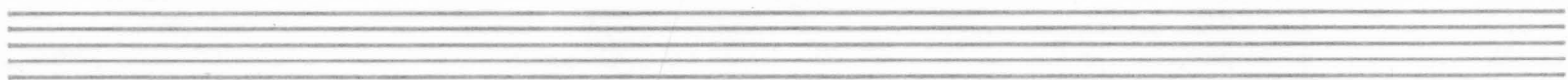
120 rit.



a tempo



rit.



Animato $\text{♩} = 90$ III
DANZA

Musical score for "Danza" in 3/8 time, starting at 90 BPM. The score consists of 10 staves.

- Staff 1:** *mf* (mezzo-forte)
- Staff 2:** *f* (forte)
- Staff 3:** *f* (forte), *mp* (mezzo-piano)
- Staff 4:** *mf* (mezzo-forte)
- Staff 5:** *f* (forte), *p* (piano), *mf* (mezzo-forte)
- Staff 6:** *mp* (mezzo-piano), *crescendo poco a poco*
- Staff 7:** *f* (forte)
- Staff 8:** *poco rit.* (poco ritardando), *mp* (mezzo-piano), *poco meno mosso* (poco meno mosso), $\text{♩} = 72$
- Staff 9:** *pp* (pianissimo), *mp* (mezzo-piano)
- Staff 10:** *mp* (mezzo-piano)

Measure numbers are indicated in boxes: 10, 20, 30, 40, 50, 60, 70.

80

80

90

90

7

מ

5

100

100

mf

mp

mf

P

rit.

110

110

Tempo 1° $\text{♩} = 90$

Tempo 1° $\text{♩} = 90$

mf

p

f

120

120

130

130

-mp

pp

2

f

140

ff

150

mf

mp

f

mf

2

160

p

mf

f

ff

fff