

SCHERZO EROICO

Walter Ross
2006

Bass 1

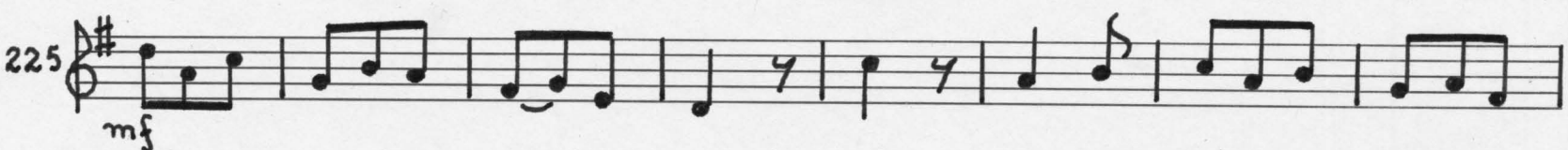
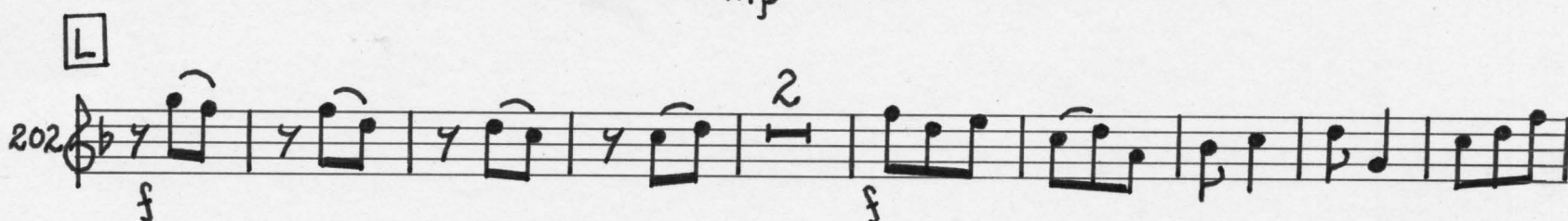
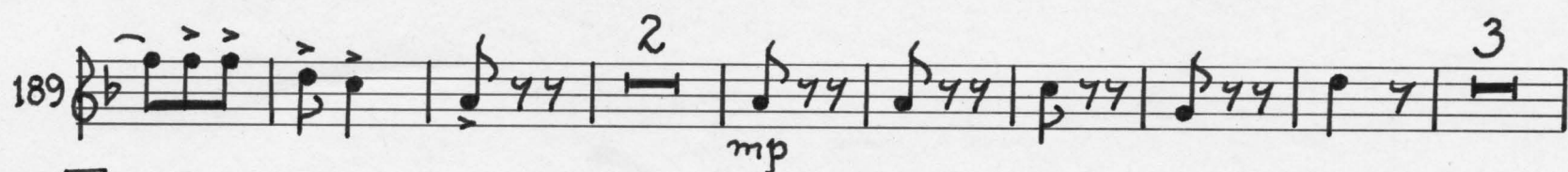
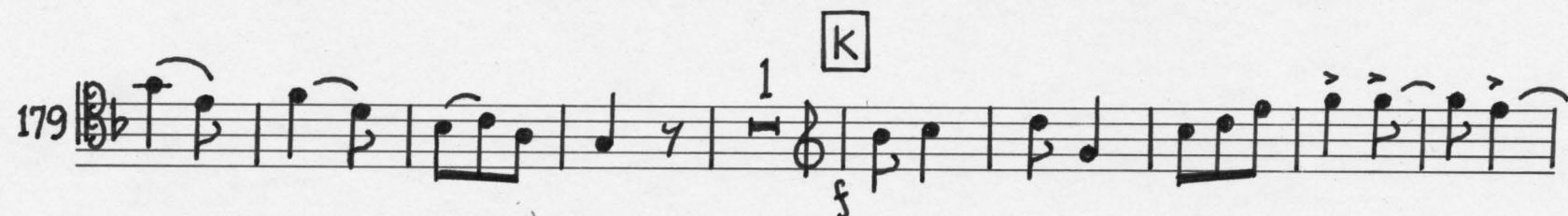
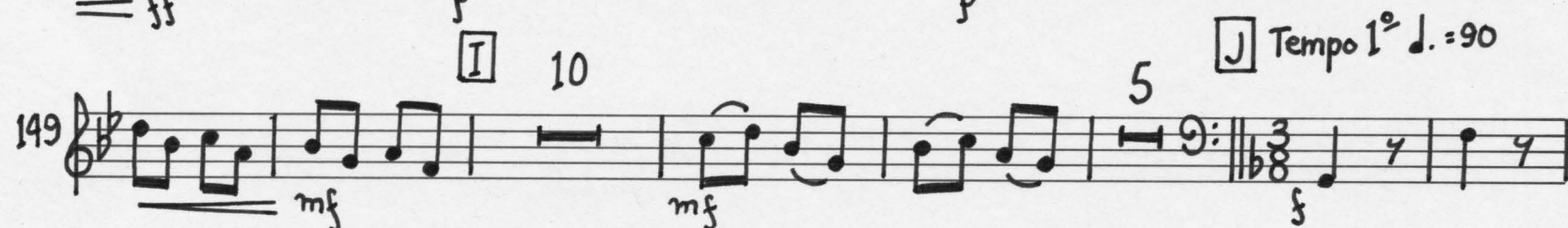
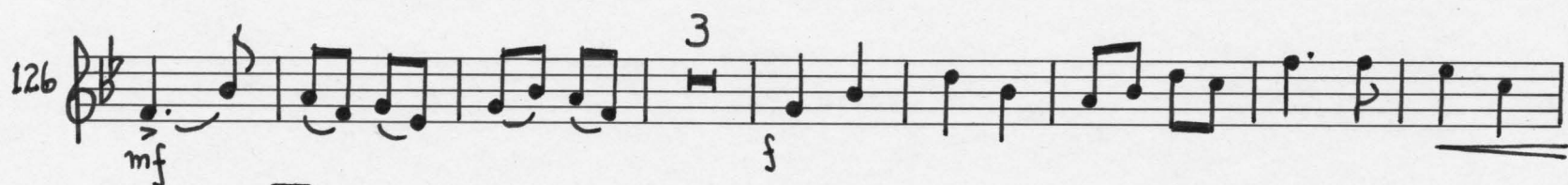
Ardito \downarrow = 90 (in 1)

SCHERZO EROICO

Bass I

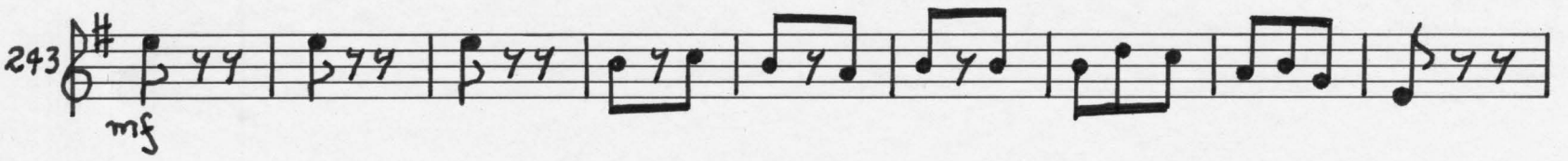
Handwritten musical score for "The Rose Tree" in 3/8 time. The score is written on ten staves, with measures numbered 9, 18, 32, 44, 56, 69, 91, 103, and 113. The key signature is one flat (B-flat), and the time signature is 3/8. The score includes various musical notations such as eighth notes, sixteenth notes, and rests. Dynamics include *f* (forte), *mf* (mezzo-forte), and *leggero*. Section markers are labeled A, B, C, D, E, and G. Measure numbers are placed at the beginning of each staff. The score concludes with a final measure marked with a double bar line.

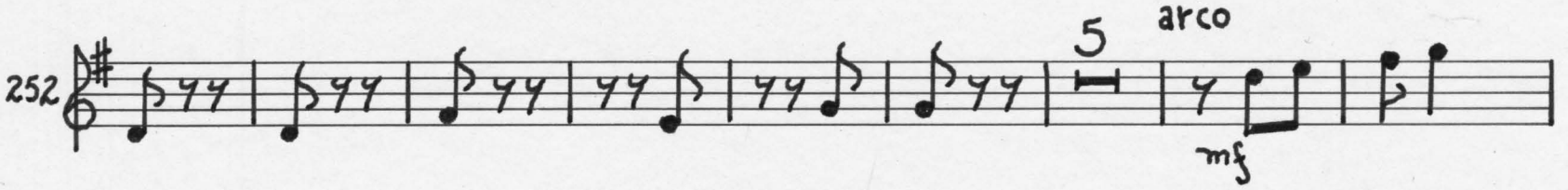
2.



[N]

pizz.

243 

252 

265 

Tempo II ♩ = 135

275 

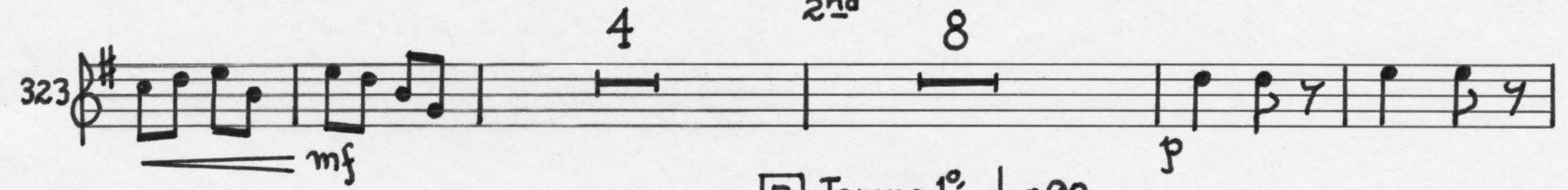
284 

296 

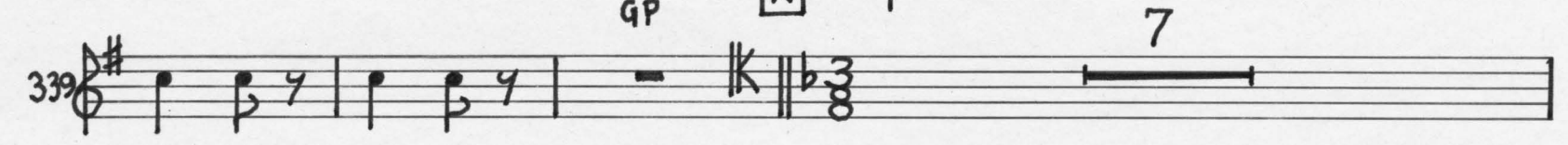
304 

[Q]

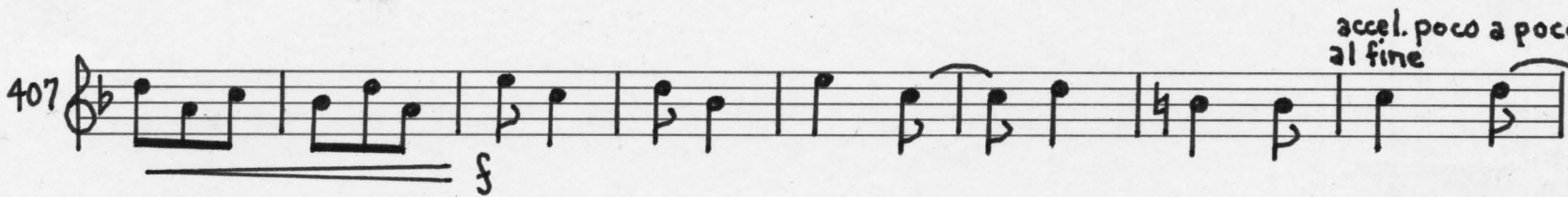
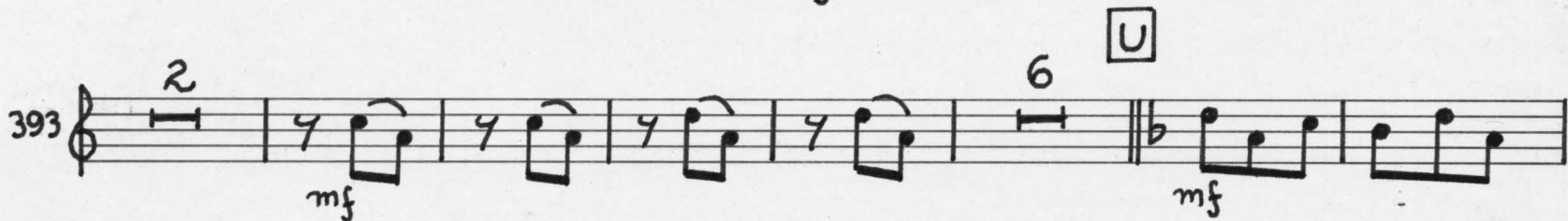
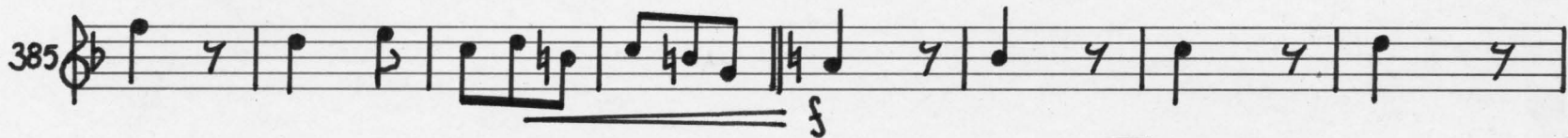
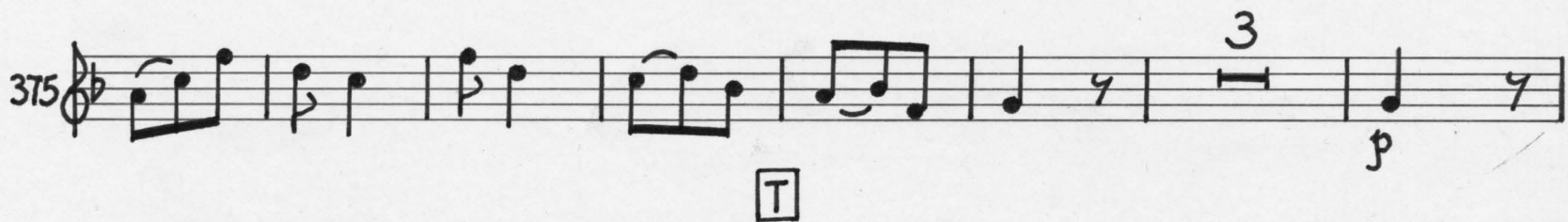
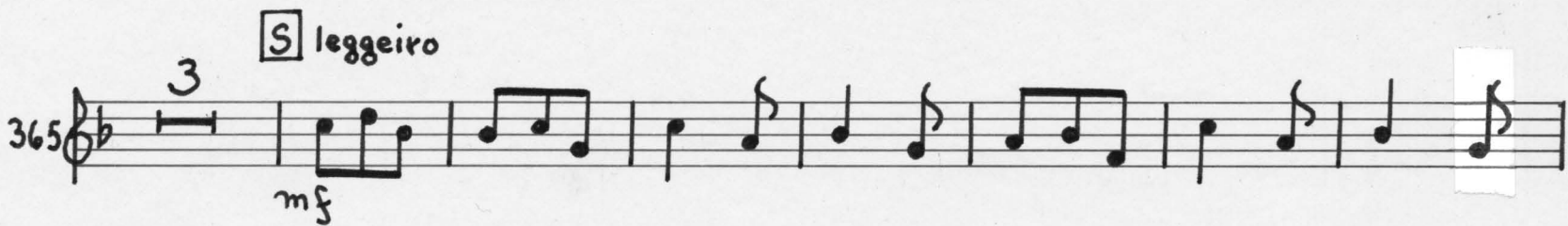
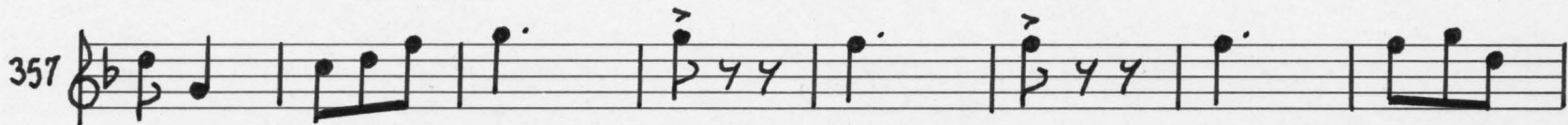
312 

323 

Tempo I° ♩ = 90

339 

4.



accel. poco a poco
al fine