

RONDINO FANTASTICO

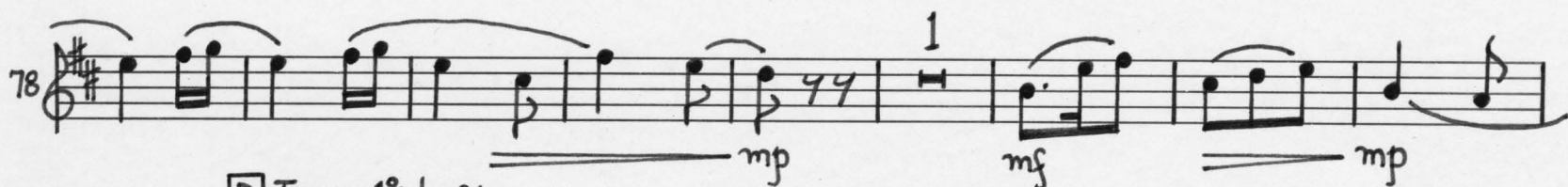
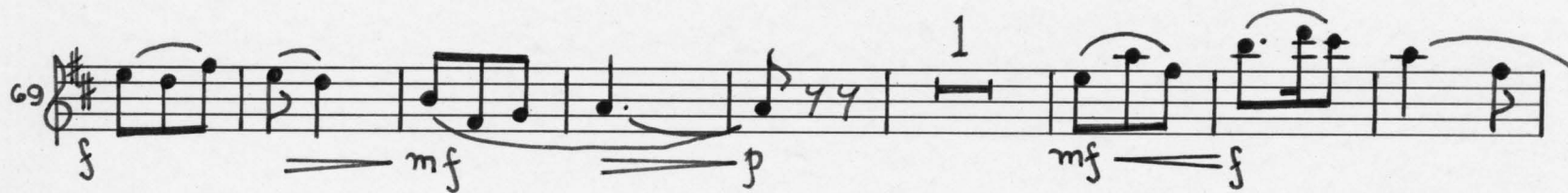
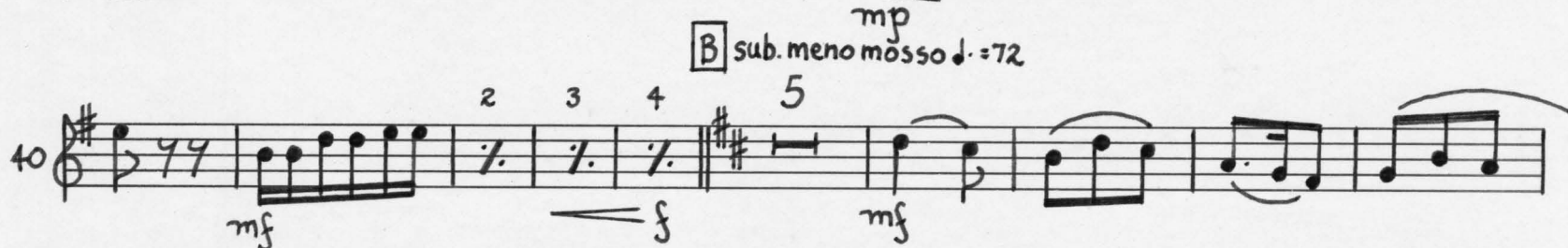
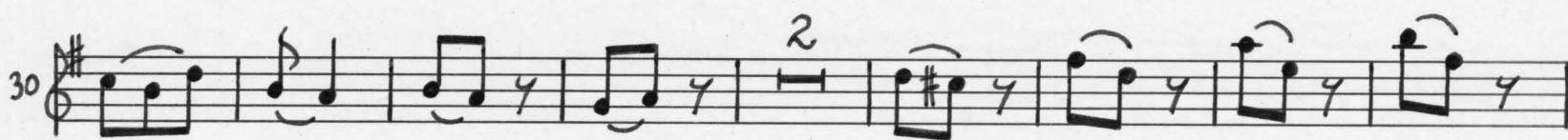
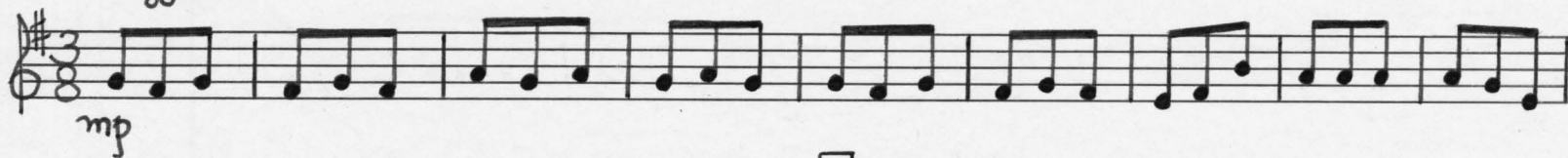
Walter Ross

Flute 3

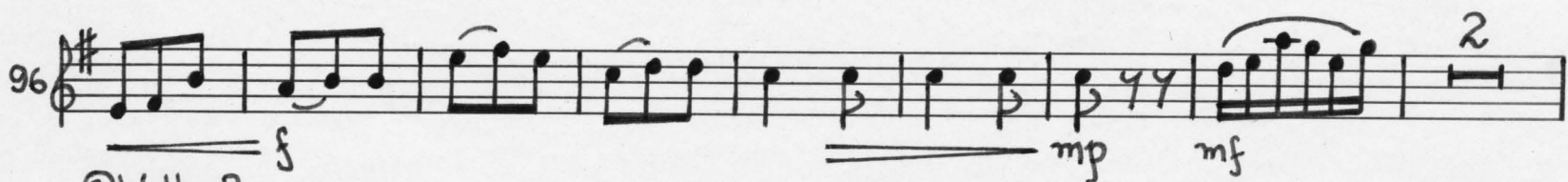
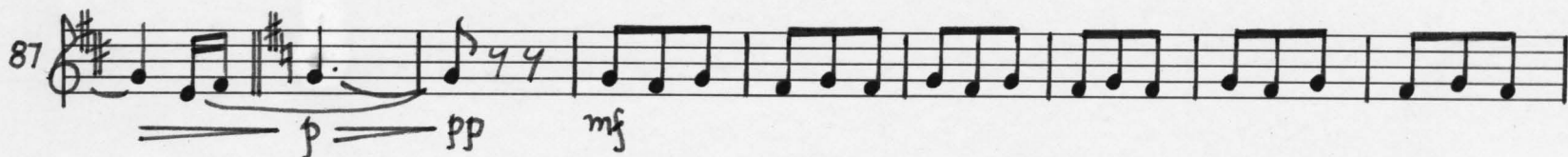
Allegro animato $\text{♩} = 96$
leggero

RONDINO FANTASTICO

Flute III



[D] Tempo 1° $\text{♩} = 96$



2.

Handwritten musical score for a piano piece, measures 106 to 191. The score is in treble clef with a key signature of one sharp (F#). It features various musical notations including dynamics (*mf*, *f*, *p*, *mp*), articulation (accents, slurs), and fingerings (1, 2, 3). Section markers E, F, G, H, and I are placed above the staves. Measure numbers 106, 115, 124, 134, 143, 152, 161, 173, 181, and 191 are indicated at the start of their respective staves.

Measures 106-114: Section E. Dynamics: *mf*, *f*. Fingering: 1.

Measures 115-123: Section F. Dynamics: *p*, *f*. Fingering: 1.

Measures 124-133: Section G. Dynamics: *mf*, *mp*. Fingering: 1, 2.

Measures 134-142: Section H. Dynamics: *mf*, *mp*. Fingering: 1, 2.

Measures 143-151: Section I. Dynamics: *mf*, *f*. Fingering: 1, 2. Includes the instruction "sempre" with a musical notation example.

Measures 152-160: Section J. Dynamics: *mf*, *f*. Fingering: 1, 2.

Measures 161-172: Section K. Dynamics: *f*. Fingering: 1, 2, 3.

Measures 173-180: Section L. Dynamics: *mf*, *f*. Fingering: 1, 2.

Measures 181-190: Section M. Dynamics: *mf*, *f*. Fingering: 1, 2.

Measure 191: Section N. Dynamics: *mf*, *f*. Fingering: 1.

rit. al rit. short J tempo 1^o $\text{J.} = 96$

199 p mp K

208 p mf

217 sub.f mf 2

227 2

237 mp mp pp 2

L molto meno mosso Fl. II $\text{J.} = 72$ 5 1

247 ppp mf

261 1st and 2nd 6 4 mp f mf

M

280 mp p mf f 1

N Tempo 1^o $\text{J.} = 96$

291 mp p pp 3

304 mf f 1

Handwritten musical score for a single melodic line, likely for a violin or flute. The score is written on ten staves, each beginning with a measure number. The key signature is one sharp (F#), and the time signature is 4/8. The notation includes various musical symbols such as notes, rests, slurs, and dynamic markings.

Measure numbers and dynamics:

- 315: *mf*
- 329: *mp*, *p*
- 340: *mf*, *p*
- 350: *f*
- 361: *mf*, *p*, *pp*
- 379: *mf*, *f*, *mf*, *f*
- 392: *sub: f*
- 401: *mf*, *p*
- 411: *mf*
- 422: *cresc.*, *ff*

Rehearsal marks and other annotations:

- Rehearsal mark 1 (square with a circle) above measure 315.
- Rehearsal mark 1 (square with a circle) above measure 350.
- Rehearsal mark Q (square with a Q) above measure 379.
- Rehearsal mark R (square with an R) above measure 401.
- First ending bracket (1) above measures 315-328.
- Second ending bracket (2) above measures 361-378.
- Third ending bracket (3) above measures 392-400.
- Fourth ending bracket (4) above measures 411-421.
- Measure 361 contains a double bar line with a repeat sign.
- Measure 401 contains a double bar line with a repeat sign.
- Measure 422 ends with a double bar line.