

FOR THE ALDENHALL ENSEMBLE
AND THE RIVANNA QUARTET

NONET

**WALTER
ROSS**

2003

Bass

Malincolico $\downarrow = 72$

I

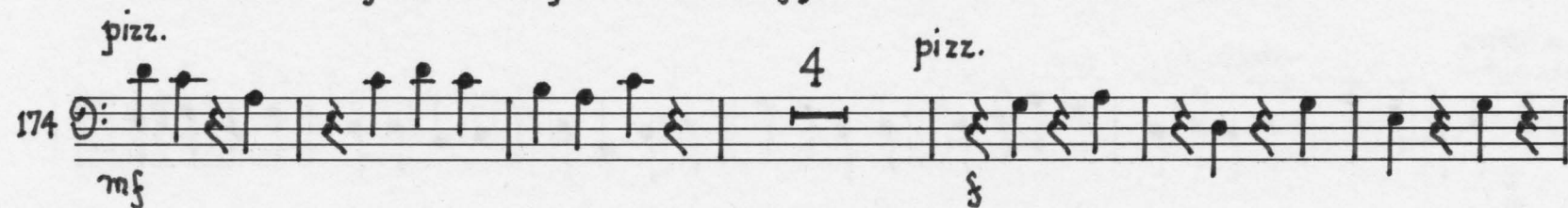
Vn.
Va.
'cello

Mammone 1-12
 4 ^{va. cello} 2
 13 **A** Allegro energico $\text{♩} = 120$
 30 **B** 6 pizz. ff mp
 43 **C** Fl. Ob. 9 **D** pizz. mp poco rit. 2 2 G.P.
 70 a tempo arco simile
 77 rit. poco a poco **E** $\text{♩} = 90$ bssn. cello 9 rit.
 98 a tempo pizz. mp 3 arco mf f mf
 108 **F** subito Allegro energico $\text{♩} = 120$ 8 3 off f
 124 3 2 V.S.

2.

G

pizz. bass



II

Lento con grazioso ♩ = 72

Var. I 7 cl. 8

A Var. II Vn. Fl. 3

Gloriosa Virginum variations

'cello

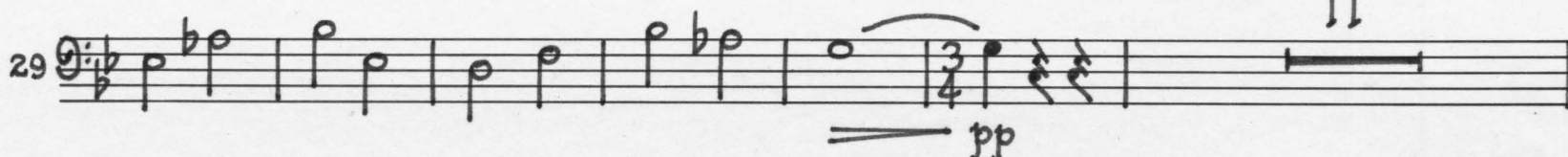
6 non vib.



Var. III

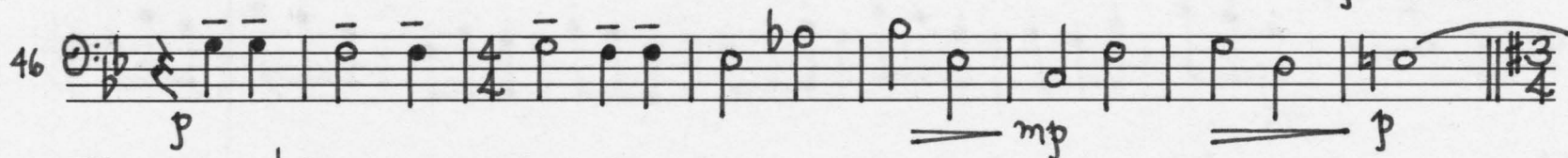
B

11



non vib.

poco accel....

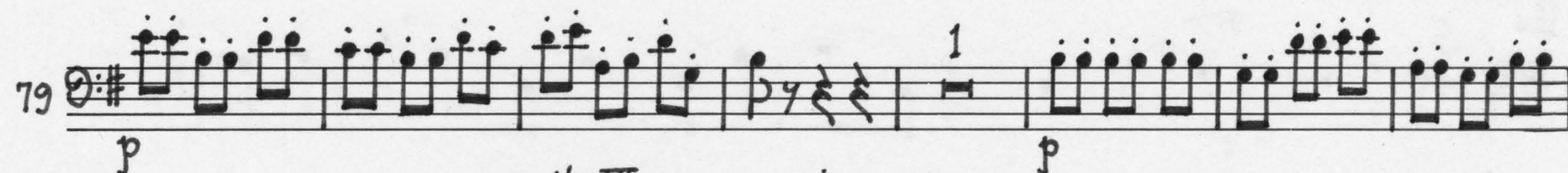


... [C] Var. IV $\text{♩} = 90$
poco più mosso

pizz.

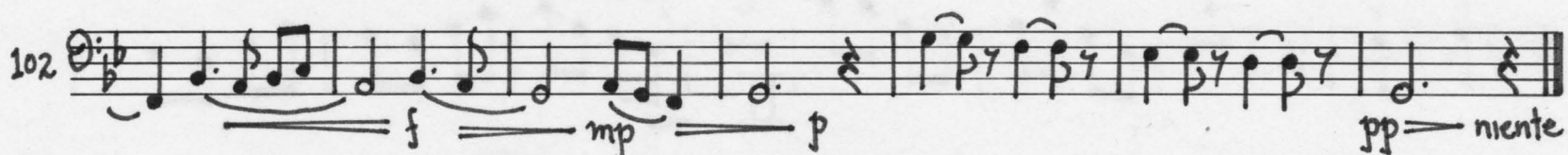
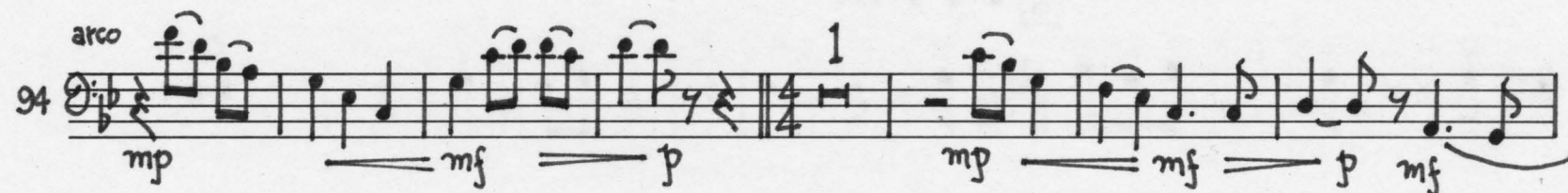
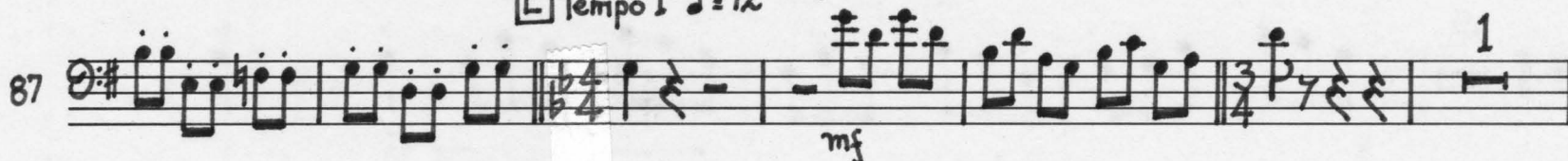


[D] Var. V
arco



[E] Var. VI
Tempo 1° $\text{♩} = 72$

pizz.



8 off sempre *mf*

[A] 8 [B] Fl. Ob. Cl. 4 modo ord. 7 4 horn

17

[C] pizz. *mf*

45

[D] 3

55

[E] w.w. horn 5 3 arco [F]

68

5 f

84

[G] $\text{♩} = \text{♩} = 120$ 2 3 8

97

pizz. 1 2 [H] pizz. *mf*

113

2 pizz. [I] 8 arco off *mp*

123

6

139

Bass

pizz.

[J] Tempo 1^o ♩ = 90 ♩ = ♩

mp

f

8

3

1

1

1

172

8

f

[K] ♩ = ♩

horn

10

5

[L] pizz.

mp

210

f

arco

3

ff

[M] ♩ = ♩

3

ff

♩ = ♩

♩ = ♩

3

f

224

ff

[N] ♩ = ♩ = 120

4

'cello

4

pizz.

mf

247

mf

[O]

4

arco

f

266

f

1

2

1

280

f

f

f

290

f

ff