

FLUTE QUARTET N°3

Flute

WALTER ROSS

I

(9)

©Walter Ross, 1991

Flute 1 score, measures 100-170. The score is written in treble clef with a key signature of one flat (B-flat). The tempo is marked *allegro* (implied by the measure numbers and dynamics). The score includes various dynamics, articulations, and performance instructions.

Measures 100-110: *f*, *p*, *mf*, *f*. Measure 100 is marked with a box containing "100". Measure 110 is marked with a box containing "110".

Measures 111-120: *mf*, *f*, *mp*, *cresc.*, *f*. Measure 120 is marked with a box containing "120".

Measures 121-130: *ff*, *mp*, *mp*. Measure 130 is marked with a box containing "130".

Measures 131-140: *mf*, *mp*, *mf*. Measure 140 is marked with a box containing "140".

Measures 141-150: *f*, *ff*. Measure 150 is marked with a box containing "150".

Measures 151-160: *cresc.*, *ff*. Measure 160 is marked with a box containing "160".

Measures 161-170: *poco rit.*, *a tempo*, *p*, *pp*, *mp*. Measure 170 is marked with a box containing "170".

The score includes various articulations such as slurs, accents, and breath marks. The key signature changes to two sharps (D major) at measure 131.

180

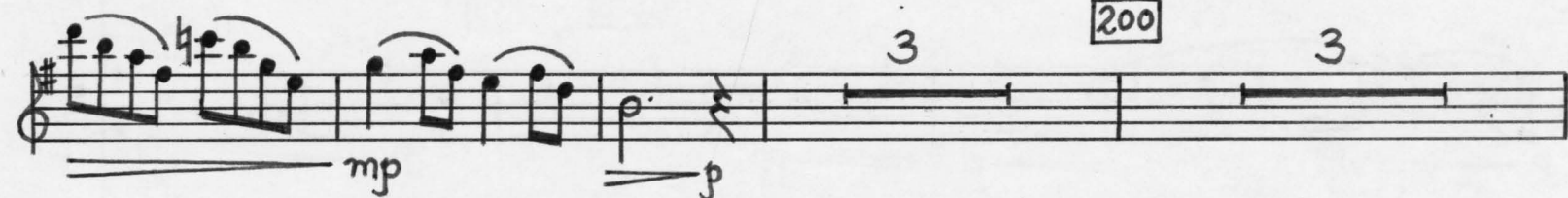
3.



190

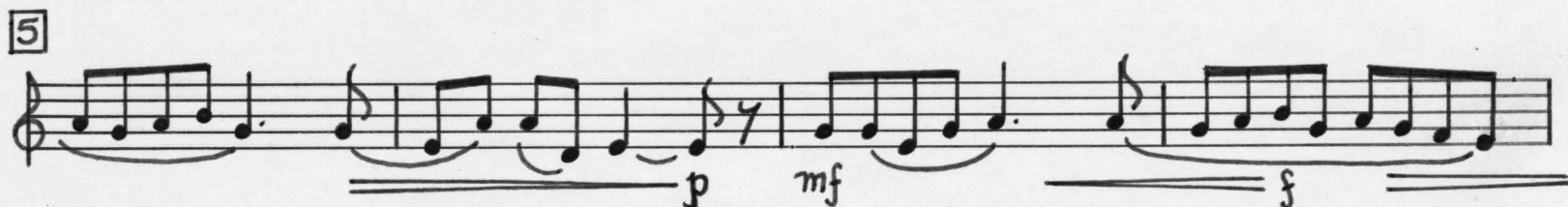


200

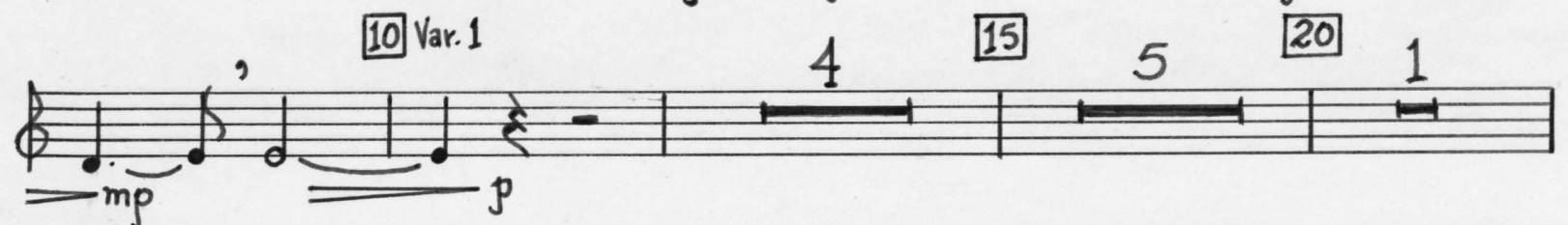


II

Andante con grazia ♩ = 60



10 Var. 1



4. Var. II

25 1

mf f mf mp

p mp p mp p

30 Var. III 35 2 (5)

p mp p pp p mf

3 40

mp p mp

Var. IV 1

mf mp

45 3 50

mp mf

p mf mp mf

55 2

mp p

Allegro leggiero $\text{♩} = 90 (\text{in } 1)$

III

5.

Handwritten musical score for "The Swan" by Camille Saint-Saëns. The score is written on a grand staff (treble and bass clefs) in 3/8 time, with a key signature of one sharp (F#). The melody is primarily in the treble clef. The score includes various dynamic markings (p, mf, f, cresc.) and articulation (accents). Measure numbers 9, 10, 30, 40, 50, 60, 70, 80, 90, 100, and 110 are boxed. The score ends with a double bar line and a 4-measure rest.

120

mp

mp

cresc.

140

p cresc. f

150 10 160

mf p mf

1

pp

170 1 9 180 5 Vn.

190

mf

6

200

mf

210

6

220

1

mf

mf

This page contains measures 230 through 290 of the musical score for 'The Rose Tree' in G major. The notation is as follows:

- Measure 230:** Starts with a treble clef and a key signature of one sharp (F#). The melody consists of eighth and sixteenth notes, ending with a double bar line.
- Measure 240:** Features a treble clef, a key signature of two sharps (F# and C#), and a time signature of 7/8. It includes a piano (*p*) dynamic marking and a first ending bracket labeled '1'.
- Measure 250:** Continues the melody with a piano (*p*) dynamic marking and a first ending bracket labeled '1'.
- Measure 260:** Features a treble clef, a key signature of two sharps, and a time signature of 4/4. It includes a mezzo-piano (*mp*) dynamic marking and a first ending bracket labeled '1'.
- Measure 270:** Continues the melody with a mezzo-forte (*mf*) dynamic marking and a first ending bracket labeled '1'.
- Measure 280:** Features a treble clef, a key signature of two sharps, and a time signature of 4/4. It includes a mezzo-forte (*mf*) dynamic marking and a first ending bracket labeled '1'.
- Measure 290:** Continues the melody with a forte (*f*) dynamic marking and a first ending bracket labeled '1'.

8.

300



310



320

