

WALDSZENEN
for twelve horns in f

F Horn 4

WALTER ROSS

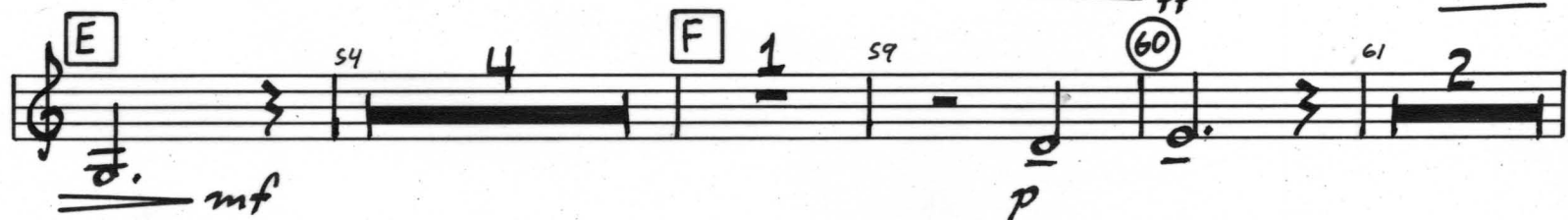
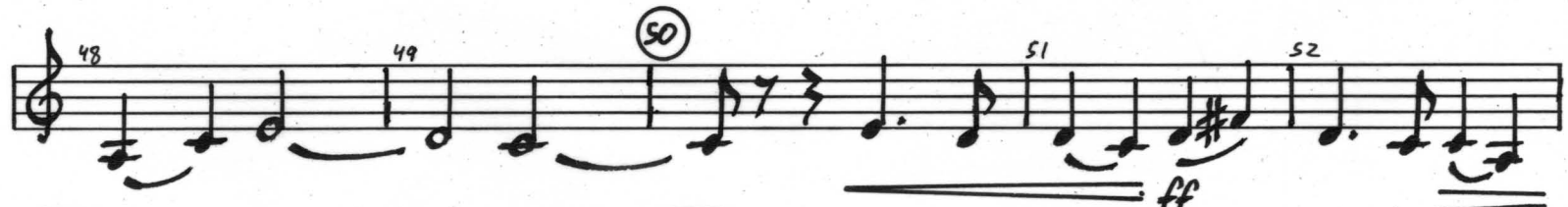
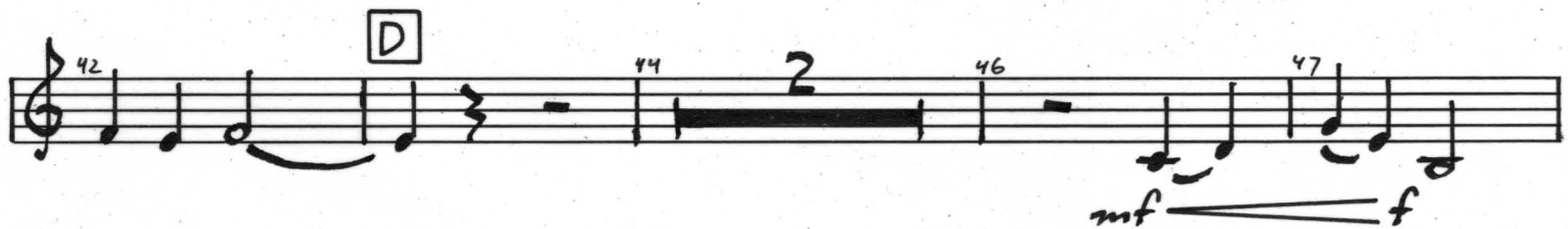
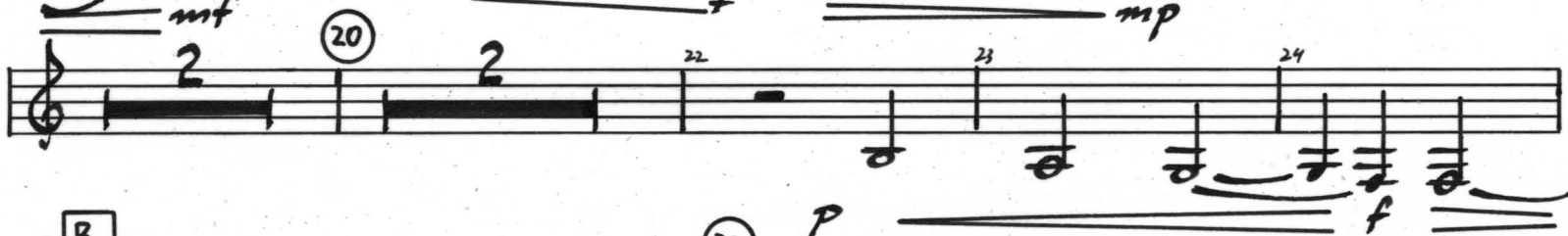
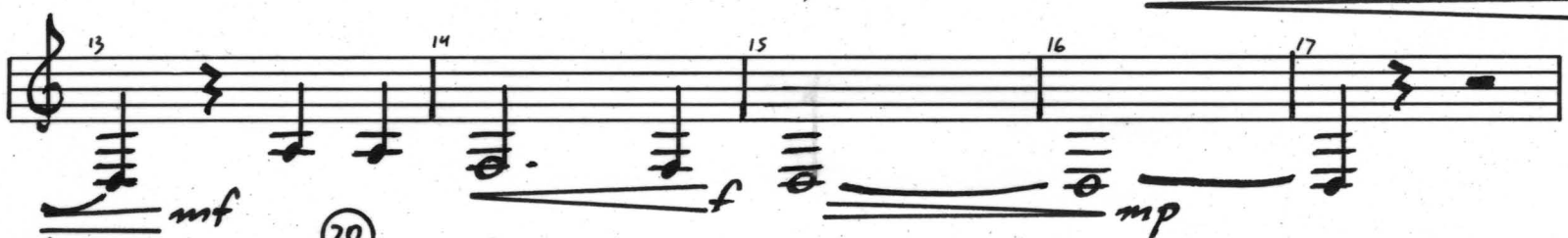
WALDSZENEN

FOR TWELVE HORNS IN F

WALTER ROSS

(LARGAMENTE $\text{♩} = 60$ (IN 2))

(F HORN 1. SOLO)



F HORN 4

(Poco Rit.)

Musical score for F Horn 4, measures 63 to 145. The score is written on a single staff with a treble clef. It includes various musical notations such as notes, rests, and dynamic markings. Key features include:

- Measures 63-68:** Notes with measure numbers 63, 64, 65, 68, 69, and 70. A circled measure number 70 is present.
- Measures 69-74:** Notes with measure numbers 69, 70, 71, 72, 73, and 74. A circled measure number 80 is present.
- Measures 75-80:** Notes with measure numbers 75, 76, 77, 78, 79, and 80. A circled measure number 80 is present.
- Measures 81-86:** Notes with measure numbers 81, 82, 83, 84, 85, and 86. A circled measure number 90 is present.
- Measures 87-92:** Notes with measure numbers 87, 88, 89, 90, 91, and 92. A circled measure number 100 is present.
- Measures 93-98:** Notes with measure numbers 93, 94, 95, 96, 97, and 98. A circled measure number 110 is present.
- Measures 99-104:** Notes with measure numbers 99, 100, 101, 102, 103, and 104. A circled measure number 120 is present.
- Measures 105-110:** Notes with measure numbers 105, 106, 107, 108, 109, and 110. A circled measure number 130 is present.
- Measures 111-116:** Notes with measure numbers 111, 112, 113, 114, 115, and 116. A circled measure number 140 is present.
- Measures 117-122:** Notes with measure numbers 117, 118, 119, 120, 121, and 122. A circled measure number 140 is present.
- Measures 123-128:** Notes with measure numbers 123, 124, 125, 126, 127, and 128. A circled measure number 140 is present.
- Measures 129-134:** Notes with measure numbers 129, 130, 131, 132, 133, and 134. A circled measure number 140 is present.
- Measures 135-140:** Notes with measure numbers 135, 136, 137, 138, 139, and 140. A circled measure number 140 is present.
- Measures 141-145:** Notes with measure numbers 141, 142, 143, 144, and 145. A circled measure number 140 is present.

Dynamic markings include *mf*, *p*, *f*, and *pp*. Performance instructions include **(Poco Rit.)**, **(BRILLANTE d=108)**, **(LEGGERO)**, and **HRNS 9-12**. Section markers **G**, **H**, **I**, **J**, **K**, and **L** are present. Measure numbers 63, 64, 65, 68, 69, 70, 71, 72, 73, 74, 75, 76, 77, 78, 79, 80, 81, 82, 83, 84, 85, 86, 87, 88, 89, 90, 91, 92, 93, 94, 95, 96, 97, 98, 99, 100, 101, 102, 103, 104, 105, 106, 107, 108, 109, 110, 111, 112, 113, 114, 115, 116, 117, 118, 119, 120, 121, 122, 123, 124, 125, 126, 127, 128, 129, 130, 131, 132, 133, 134, 135, 136, 137, 138, 139, 140, 141, 142, 143, 144, and 145 are indicated.

F HORN 4

SEMPRE LEGGIERO

146 2 148 149 150 151

mf

152 M 154 3 157 158 1

mf

159 160 1 161 162 163 7

mp p p

170 N 2 177 178

mf p

179 180 4 184 185 186

187 2 189 190 1 191 192 193 3

sfz f

196 197 198 2 200 1 201 202

f f

203 204 205 206 1 207 208

f

209 210 211 212 213

214 215 216 217 2

p

F HORN 4

P **220** **221** **222** **223**

224 **225** **226** **227** **228**

229 **230** **231** **232** **233**

234 **235** **236** **237** **238** **239**

240 **249** **250** **251** **252**

254 **260** **262** **263** **264**

265 **266** **270** **271** **272** **273**

274 **275** **280** **281** **282**

283 **286** **287** **288** **289**

290 **291** **295** **296** **297** **298**

f **f** **stffz** **mf** **p** **p** **mp** **pp** **mp** **mf** **f** **mf** **f** **ff** **mf** **p** **mf** **mf** **f**

Rit. Poco A Poco **Q** **MENO MOSO** **d=90** **R** **S** **T** **U** **FESTIVO** **d=108 (IN 1)** **Poco Rit.**

F HORN 4

299 300 301 302 303 1 2 306

307 309 310 312 313 315

316 320 326 327 328

329 330 331 332 333 334 6

340 343 344 345 346 347

348 349 350 351 6 358

359 360 361 362 363 364

365 369 370

371 372 373 374 375

376 377 380 6

p *p* *p* *f* *f* *f* *mp* *mp* *f*

W X Y Z

✓

F HORN 4

386 387 388 389 390

391 392 AA MUTE 394 6 400 3 403 MUTE

404 405 406 407 BB OPEN mf 2

410 420 2 422 2 CC OPEN 425 426

427 428 429 430 3 DD 7

440 HANS 5-8 441 442 443 444 445

446 447 EE 449 1 450 10

460 461 462 463 464

465 466 467 468 469

470 471 472 473 474 7

ff fff