

**INTRODUCTION
AND
ALLEGRO**

**FOR
12
TROMBONES**

WALTER ROSS

Trombone 2

TROMBONE II

WALTER ROSS

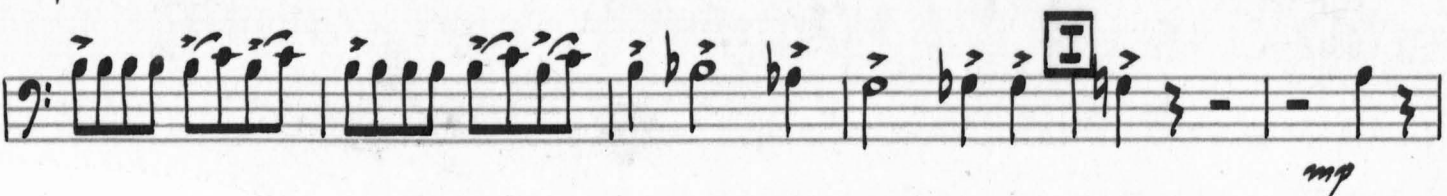
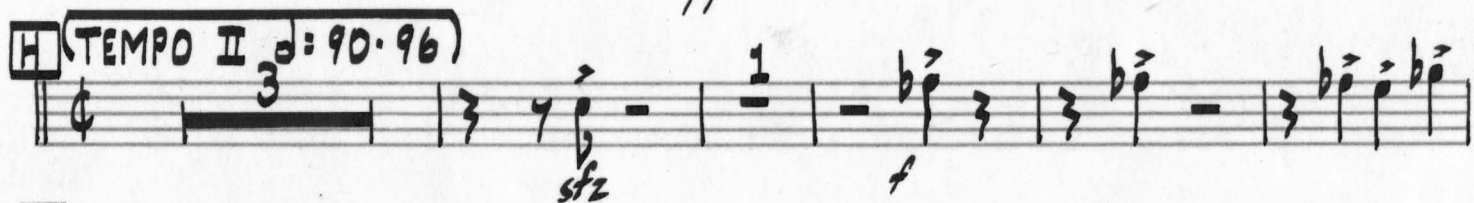
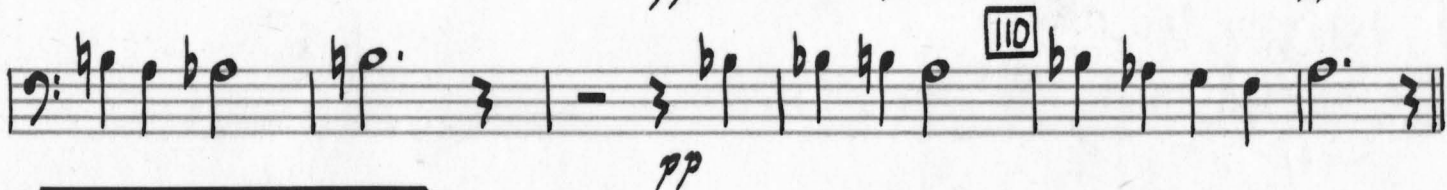
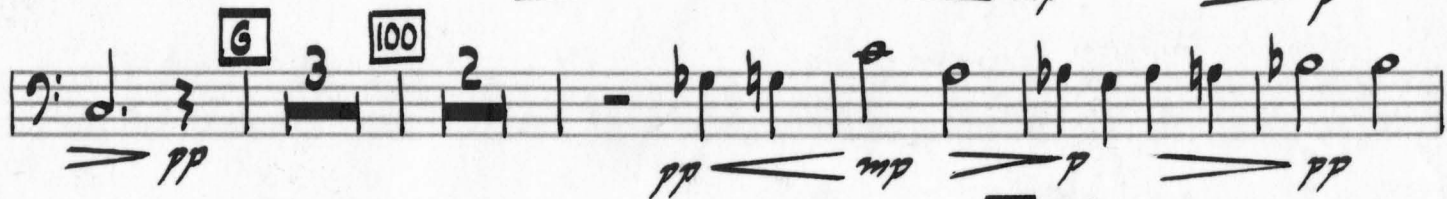
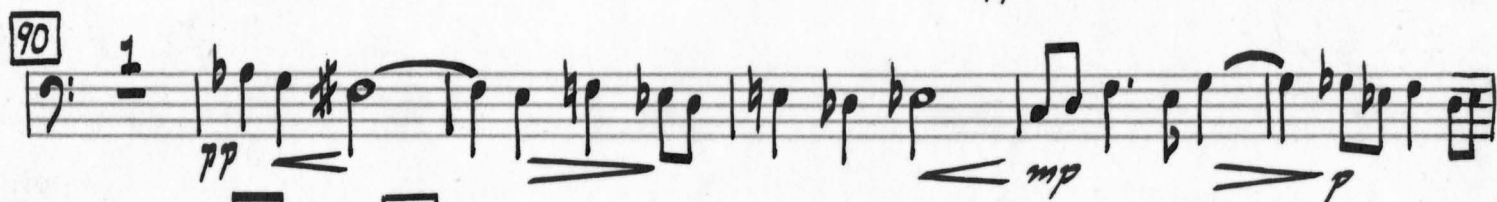
Introduction and Allegro

(INTRODUCTION MAESTOSO $\text{♩} = 72$)

Handwritten musical score for "The Swan" by Camille Saint-Saëns, featuring a piano and a cello. The score is written on ten staves. The piano part is in 3/8 time, and the cello part is in 3/4 time. The score includes various musical notations such as notes, rests, and dynamic markings. The tempo is marked "ALLEGRO AGITATO" with a metronome marking of 90-96. The score is divided into sections labeled A, B, and C. The piano part ends with a double bar line and a repeat sign.

II-2

D



II-3

Handwritten musical score for II-3, featuring ten staves of music. The notation includes various dynamics, articulations, and performance markings.

- Staff 1:** Starts with a whole rest, followed by a half note G, a quarter rest, and a half note F. Dynamics: *mf*. Measure 140 is boxed.
- Staff 2:** Starts with a whole rest, followed by a half note G, a quarter rest, and a half note F. Dynamics: *f*. Measure 150 is boxed.
- Staff 3:** Starts with a whole rest, followed by a half note G, a quarter rest, and a half note F. Dynamics: *p*. Measure 160 is boxed.
- Staff 4:** Starts with a whole rest, followed by a half note G, a quarter rest, and a half note F. Dynamics: *mp*. Measure 170 is boxed.
- Staff 5:** Starts with a whole rest, followed by a half note G, a quarter rest, and a half note F. Dynamics: *f*. Measure 180 is boxed.
- Staff 6:** Starts with a whole rest, followed by a half note G, a quarter rest, and a half note F. Dynamics: *mf*. Measure 190 is boxed.
- Staff 7:** Starts with a whole rest, followed by a half note G, a quarter rest, and a half note F. Dynamics: *sub. f*. Measure 200 is boxed.
- Staff 8:** Starts with a whole rest, followed by a half note G, a quarter rest, and a half note F. Dynamics: *pp*. Measure 210 is boxed.
- Staff 9:** Starts with a whole rest, followed by a half note G, a quarter rest, and a half note F. Dynamics: *mf*. Measure 220 is boxed.
- Staff 10:** Starts with a whole rest, followed by a half note G, a quarter rest, and a half note F. Dynamics: *f*. Measure 230 is boxed.

Additional markings include: *mf*, *f*, *p*, *mp*, *sub. f*, *pp*, *mf*, *f*, *sfz*, *sfz*, *sfz*, *ALLEGRO VIVACE*, *♩=120*, *4*, *3*, *6*, *140*, *150*, *160*, *170*, *180*, *190*, *200*, *210*, *220*, *230*.

II-4

[illegible]