

CONCERTO
for
EUPHONIUM, SYMPHONIC
BRASS AND TIMPANI

WALTER ROSS
1988

Solo Euphonium

SOLO
EUPHONIUM

CONCERTO FOR EUPHONIUM, SYMPHONIC BRASS, AND TIMPANI

Walter Ross
1988

I FANTASIA

A **B**

Drammatico $\text{♩} = 72$

4 5 10 5 15 5 20 TRPS. 1

rubato accel. a tempo

accel. a tempo

sub.p cresc. mf f

C Allegro animato $\text{♩} = 108$

30 3

D

40 10 50 **E**

mf

60

2

mp

F

70 10

ff

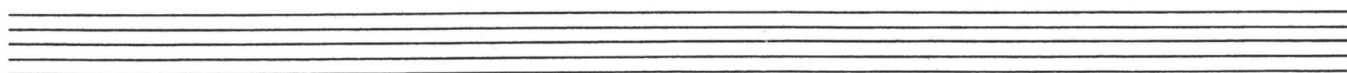
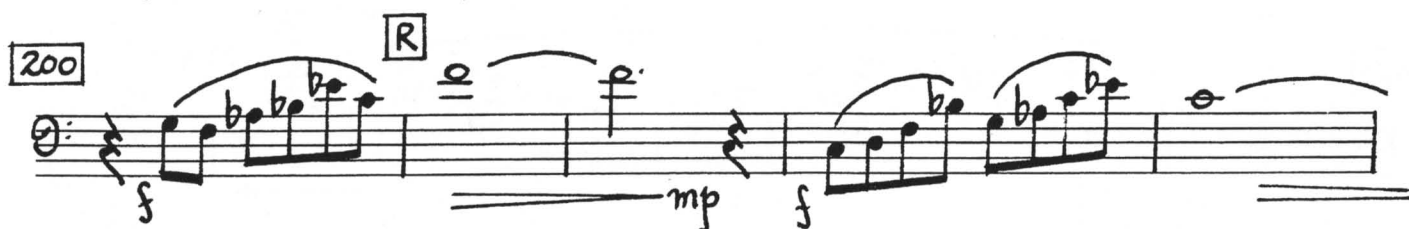
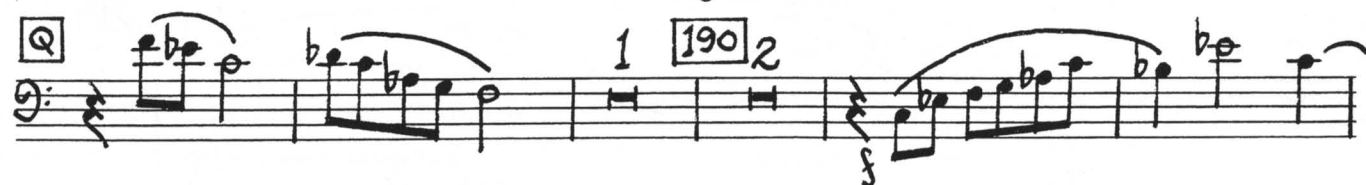
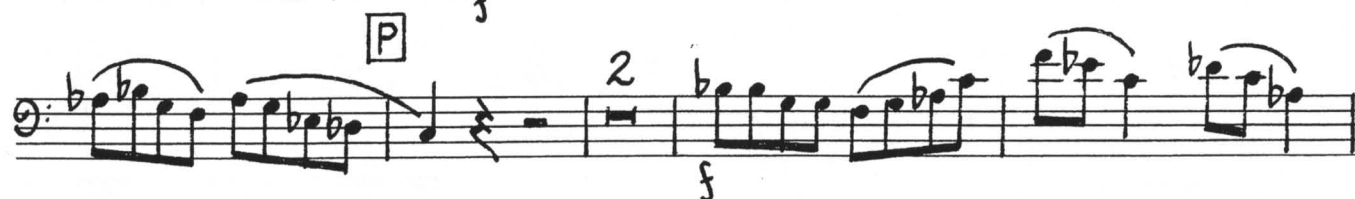
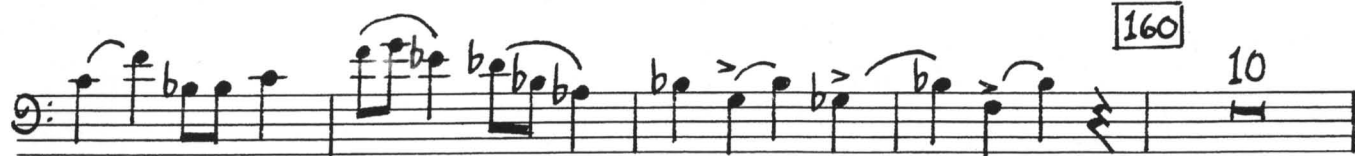
The image shows a handwritten musical score for Euphonium. It begins with a title page identifying the instrument, the piece 'CONCERTO FOR EUPHONIUM, SYMPHONIC BRASS, AND TIMPANI' by Walter Ross (1988), and the part 'SOLO EUPHONIUM'. The score is divided into sections: Section I 'FANTASIA' (measures 4-20) and Section C 'Allegro animato' (measures 30-3). Section I includes markings for 'Drammatico' tempo (72 bpm), 'rubato', 'accel.', and 'a tempo'. It features various dynamics like 'sub.p', 'cresc.', 'mf', 'f', and 'ff'. Section C is marked 'Allegro animato' (108 bpm) and includes a 'rit.' marking. The score is written on a single staff with a key signature of one flat (B-flat) and a 4/4 time signature. It includes many slurs, ties, and dynamic markings throughout.

2.

Handwritten musical score for the first movement of the Concerto for Trombone and Orchestra by John Williams. The score is written for a single trombone part and includes various musical notations such as notes, rests, dynamics, and articulations. The score is divided into measures, with measure numbers 80, 90, 100, 110, 120, 130, 140, and 150 marked. The key signature is one flat (B-flat major or D minor). The time signature is 2/2. The score includes a tempo change to "poco meno mosso" at measure 100 and a tempo change to "subito Tempo 1°" at measure 140. The score is written on a single staff with a bass clef. The notation includes various musical symbols such as notes, rests, beams, and slurs. The dynamics range from "f" (forte) to "p" (piano). The score is a handwritten manuscript, likely a working draft, and is written in ink on a single sheet of paper.

[N]

3.



4.

II
chorale variationsPoco adagio $\text{♩} = 60$

Handwritten musical score for "II chorale variations". The piece is in G major (one sharp) and 4/4 time, marked "Poco adagio" with a tempo of $\text{♩} = 60$. The score consists of 45 measures across 10 staves. The notation includes various musical symbols such as notes, rests, accidentals, and dynamic markings (mp, mf, p, f). Section markers A, B, and C are present, along with tempo changes like "poco rubato" and "in tempo giusto".

Measures 1-4: mp, 1

Measures 5-8: mf, p, mp, mf

Measures 9-12: p, mp

Measures 13-16: mf, f, mp

Measures 17-20: mf, f, mp

Measures 21-24: mf, p

Measures 25-28: mf, mp

Measures 29-32: mf, p

Measures 33-36: mf, p, poco rubato

Measures 37-40: mf, mp, in tempo giusto, 3

Measures 41-44: mf, poco, p, mp

50

mf

C1

1

p

mf

60

D

3

Allegro giocoso $\text{♩} = 96 (\text{in } 1)$

9

10

7

III scherzo

20

f

30

B

3

40

2

C

8

50

2

D

mf

60

70

4

7

6. E cantabile

6. **E** cantabile

mp mf p mp mf

90 3

F

mf

100

G 5 110 2

mf f

120

2 **H** 4 2 **I** 130

mf p

140

J 2

150 **K** 1 160 9 **L** tubas 1 170

mf f mf

Handwritten musical score for a single melodic line in bass clef, spanning measures 180 to 230. The score includes various musical notations such as notes, rests, slurs, and dynamic markings.

Measures 180-189: *mp*, *p*, *mp*. Measure 180 is boxed. Measure 189 contains a measure rest for 3 measures.

Measures 190-199: *p*, $\frac{1}{2}$, *mf*, *f*. Measure 190 is boxed and labeled 'M'. Measure 199 contains a measure rest for 5 measures.

Measures 200-209: *f*. Measure 200 is boxed. Measure 209 contains a measure rest for 1 measure.

Measures 210-219: *f*. Measure 210 is boxed. Measure 219 contains a measure rest for 1 measure.

Measures 220-229: *f*. Measure 220 is boxed and labeled 'N'. Measure 229 contains a measure rest for 1 measure.

Measures 230-239: *f*. Measure 230 is boxed and labeled 'O'. Measure 239 contains a measure rest for 9 measures.

Measure 240: *v.s.*

8.

260

Handwritten musical score for piano, measures 260-263. The score is written on two staves. Measure 260 (top staff) begins with a treble clef, a key signature of one flat (B-flat), and a 3/4 time signature. It contains a half note chord (F4, B-flat4) and a quarter note chord (F4, B-flat4). Measure 261 (top staff) contains a half note chord (F4, B-flat4) and a quarter note chord (F4, B-flat4). Measure 262 (top staff) contains a half note chord (F4, B-flat4) and a quarter note chord (F4, B-flat4). Measure 263 (bottom staff) contains a half note chord (F4, B-flat4) and a quarter note chord (F4, B-flat4). The score includes dynamic markings: *f* (forte) in measures 260, 261, and 262; *cresc.* (crescendo) in measure 263; and *ff* (fortissimo) in measure 263. The notation includes various accidentals (sharps, flats, naturals) and articulation marks (accents, slurs).

