

CONCERTINO IN SILVER AND BRONZE

Walter Ross

© Walter Ross 1990

Solo Flute

SOLO
FLUTE

CONCERTINO IN SILVER AND BRONZE

Walter Ross
1990

Elegiaco $\text{♩} = 54$

4 5 10 3 I trumpets 1 15 1

mf 20 mf

f mf p

25 mf mf f

30 mf f p

40 f p

35 4 3 mf f mf f mf p

45 mf f mf p

50 55 1 5 mp

mf mp p pp

(2) pocorrit.

II

Grazioso $\text{♩} = 54$ (in 1)

4 trbs. 4 trps. 1 10 7 horns tuba 3 20 1

mp time

2.

Fl.

Handwritten musical score for Flute 1, measures 30 to 130. The score is written on ten staves. Measure numbers are boxed: 30, 40, 50, 60, 70, 80, 90, 100, 110, 120, 130. The key signature has one flat (B-flat). The time signature is 4/4. The score includes various musical notations such as slurs, ties, and dynamic markings. The dynamics range from *p* (piano) to *ff* (fortissimo). The tempo is marked *timp.* (timpani) at measure 110. The tempo is also indicated as $\text{♩} = \text{♩ in 3} (\text{♩} = 162)$ at measure 110. The score includes the instruction *burlando* at measure 70. The score ends with a final measure (130) marked *ff* and a crescendo leading to a final chord.

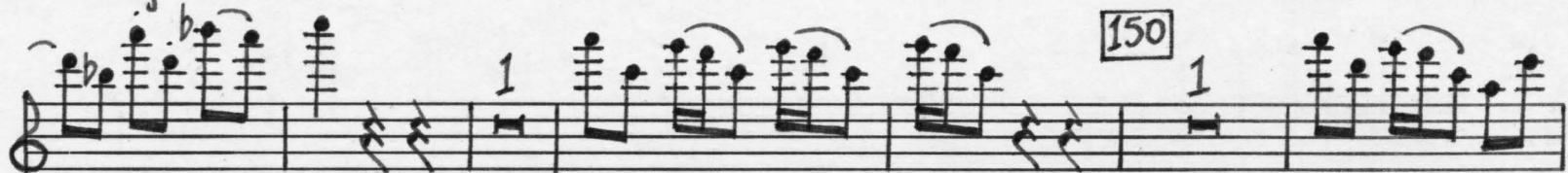
Measures 30-40: *mf*, *f*, *mf*, *f*. Measure 40: *mf*, *f*. Measure 50: *mf*, *f*. Measure 60: *f*, *mf*, *cresc.*. Measure 70: *f*, *mf*, *decresc.*, *burlando*. Measure 80: *p*, *mf*. Measure 90: *mf*, *cresc.*. Measure 100: *f*, *cresc.*. Measure 110: *f*, *ff*. Measure 120: *f*, *cresc.*. Measure 130: *ff*.

Fl.

140



150

Tempo 1°
♩ = 54 (in 1)

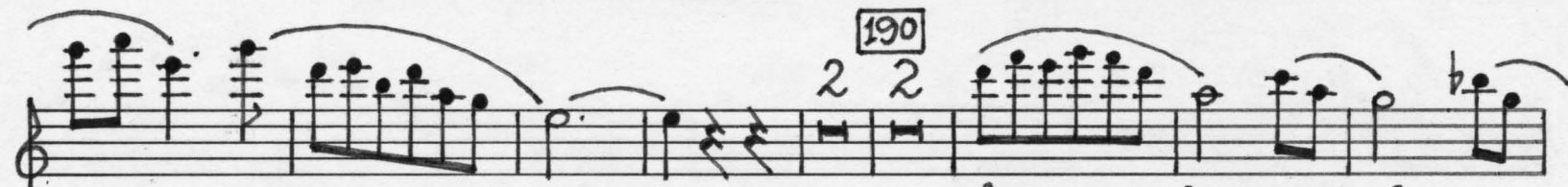
160



180



190



200



210



220



4. Burlesco $\text{♩} = 108$

III

Fl.

9 10 1 horns 2

20 f f

30 muted brass 3 6 mf

40 f

ff f 50 5 ff f mf

60 mp mf p mf f

$rit.$ pp f $rit.$

70 meno mosso $\text{♩} = 72$
religioso

$rit.$ $rit.$ p mf f p mf f mf

1 poco accel. 2 $a tempo (\text{♩} = 72)$ 2

mf f

7 poco rit.

[90] a tempo (d=72) *mf* *p*

[100] poco a poco accel al. . . .

... . Tempo 1^o d=108

2 7 [110] 3 horns 2 *f* *mf* [120] *p*

[130] perc. [140] 8 1 1

[150] 5

[160] 1 *ff* *ff*

cresc. *fff*