

# **CANZONA II**

**Trombone 4**

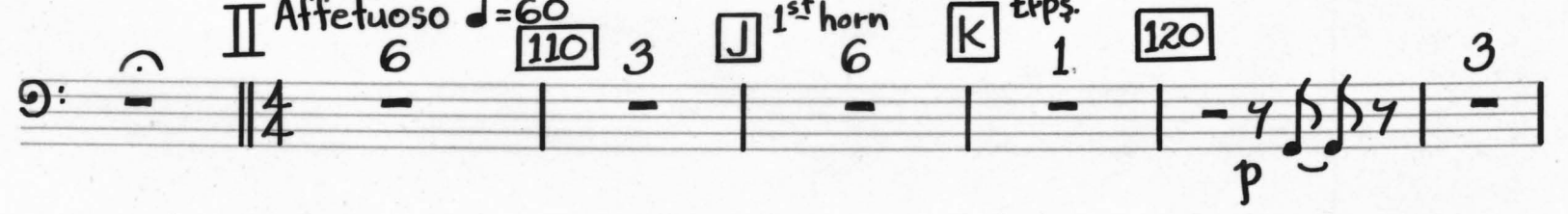
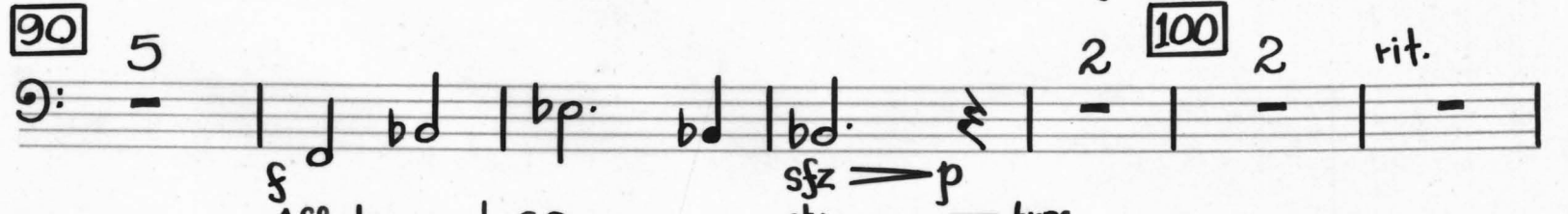
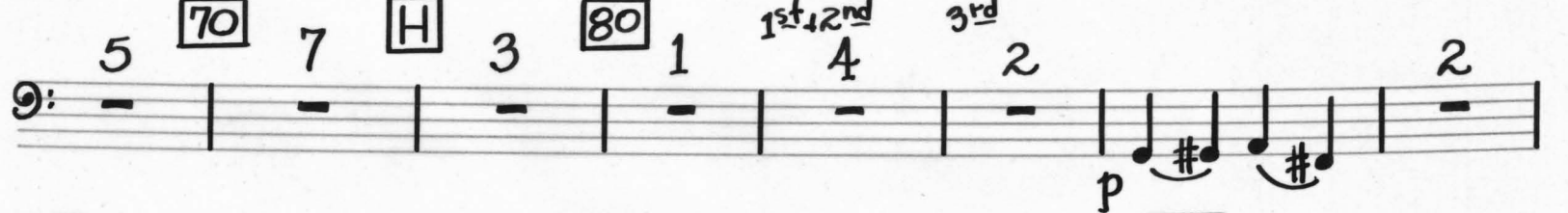
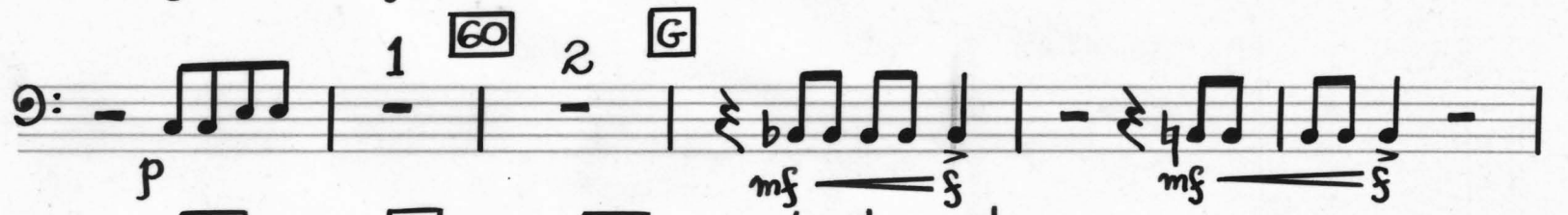
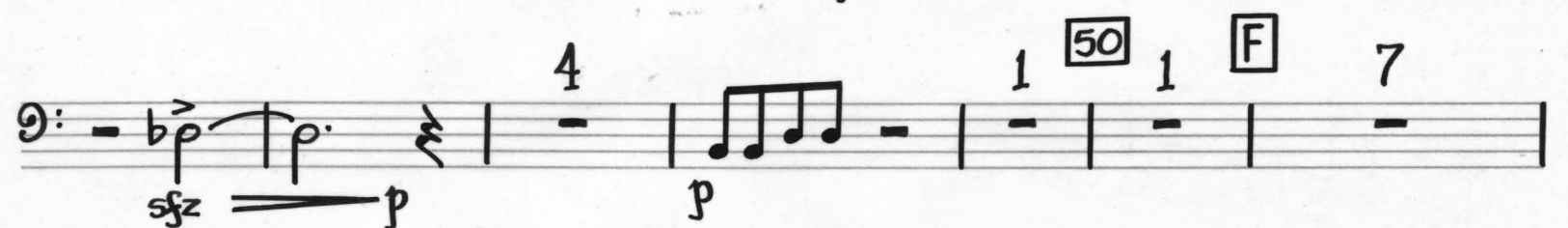
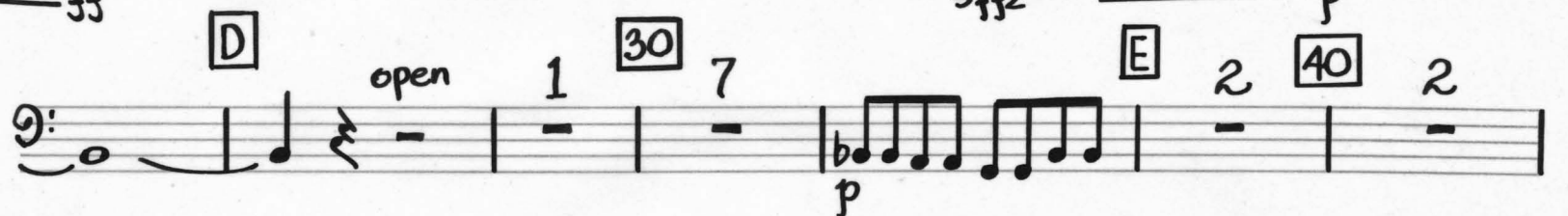
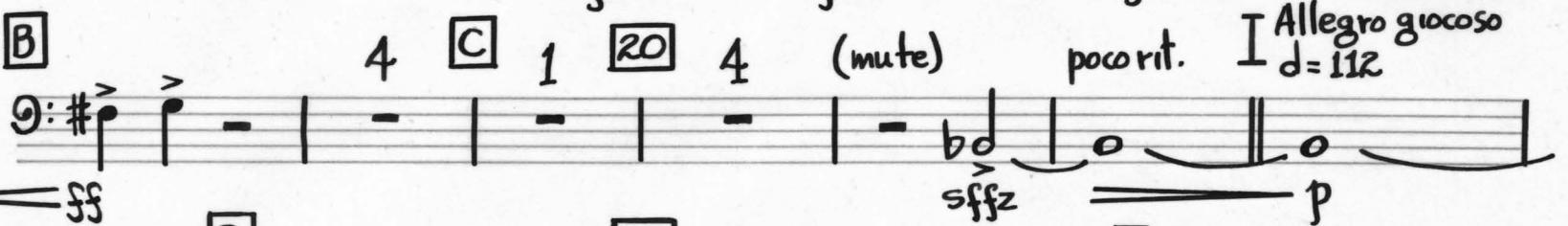
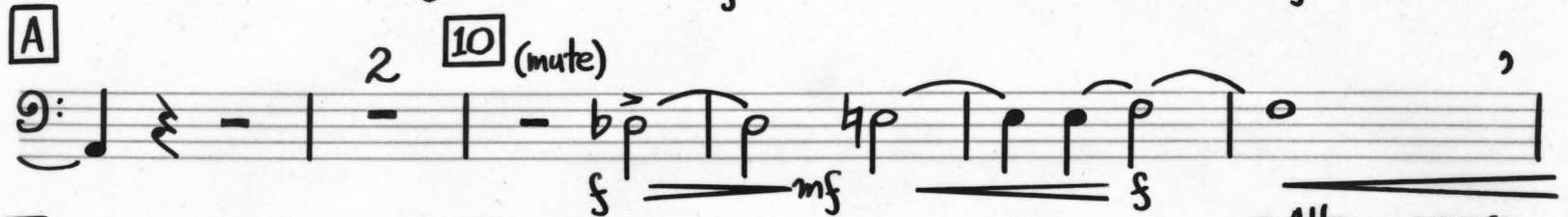
**WALTER ROSS**

4<sup>th</sup> Trombone  
introduction  
impetuoso  $\text{♩} = 84$

# CANZONA II

Walter Ross  
1979

mute 1 mute



130 1

L

140 8

III Allegro energico  $\text{♩} = 120$

150 *sf* *p*

160 2 2

M 1 170 10 180 2

190 5 200 2

N 1

210 4

220 3 4 Q

mute 5 mute 230 *mp*

open 3 rit. poco a poco

alla fermata 240

IV Adagio patetico  $\text{♩} = 60$

3



KING BRAND 1595 B'WAY, N.Y.

4 340 2 W 6

2+3 2 350 2

*p* subito meno mosso  $\text{♩} = 96$  *mp* 360 5 X mute

*ss* subito tempo 1<sup>o</sup> 370 open 6

1 380 3 Y 4 3+4 8 2

390 1 6 8 1

*con fuoco* 400 3 1 2

*ss*