

BRASS TRIO N°3

C trumpet, F horn, trombone

Walter Ross

C Trumpet

BRASS TRIO NO.3

WALTER ROSS

I.

(VIVACE $\text{♩} = 120$)

C TRUMPET

f

10

20

pp ————— *p*

mf ————— *f*

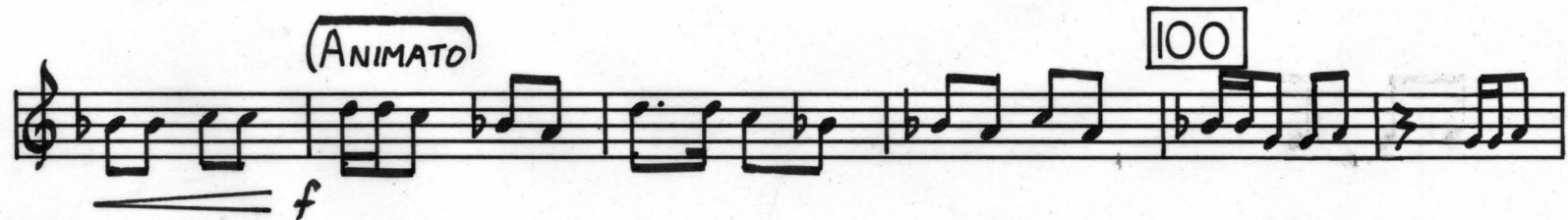
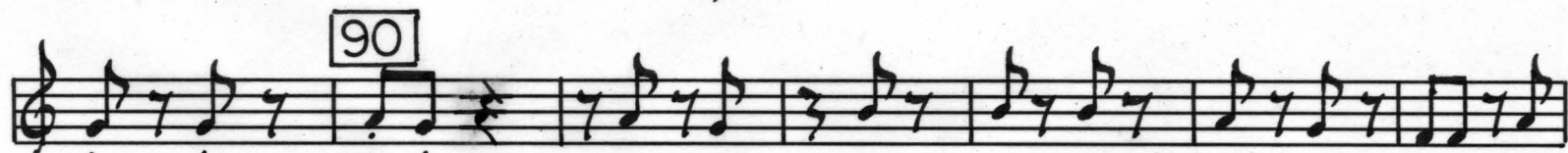
30

sfz ————— *mf*

40

6 2

TRUMPET



TRUMPET

120

f

130

1

f

140

1

mf

150

f

160

170

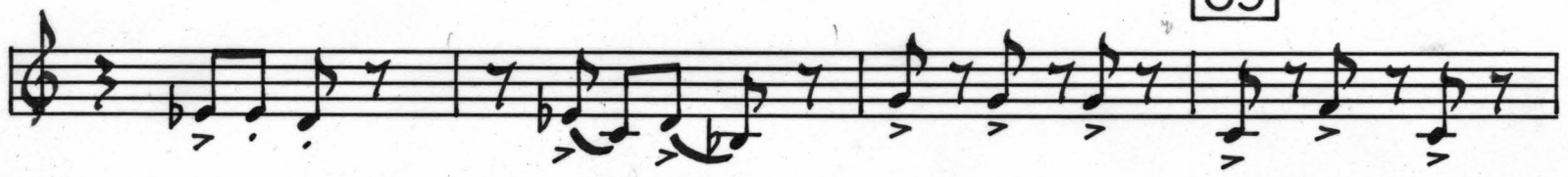
ff

(LAZY BLUE J. = 54)

Δztec® PT-8R

TRUMPET

35



40



(SCHERZANDO)

45



50



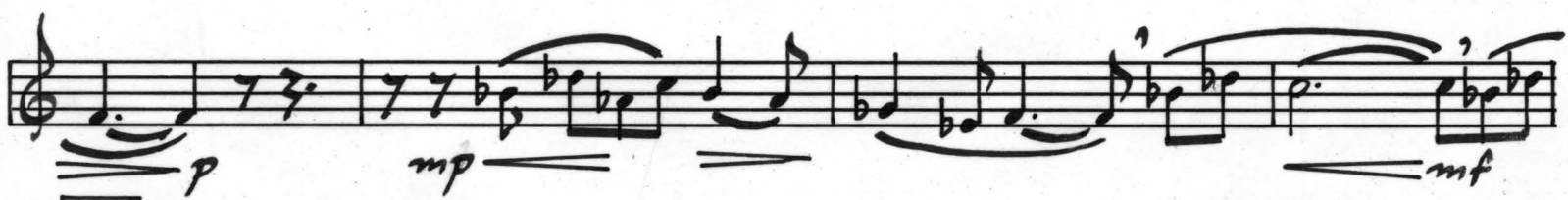
55



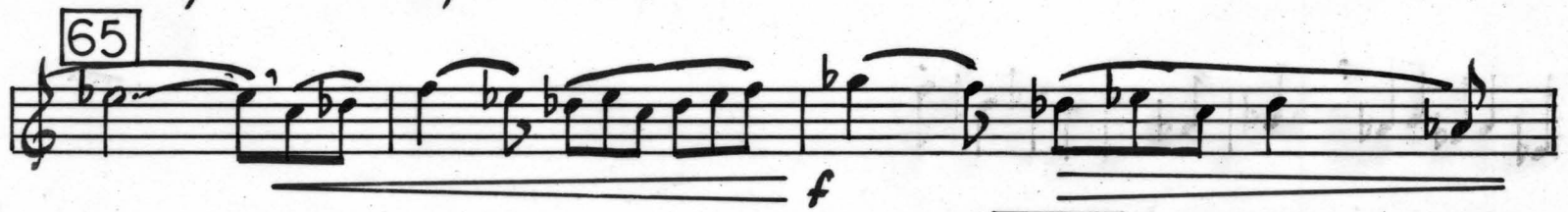
60



65



70 (Poco Rit.)



TRUMPET

70

mf

80

cresc. *f*

90

f *mf* *mp*

100

mp *p* *p* (LEGATO)

110

pp

120

130

pp *p*

140

mf

150

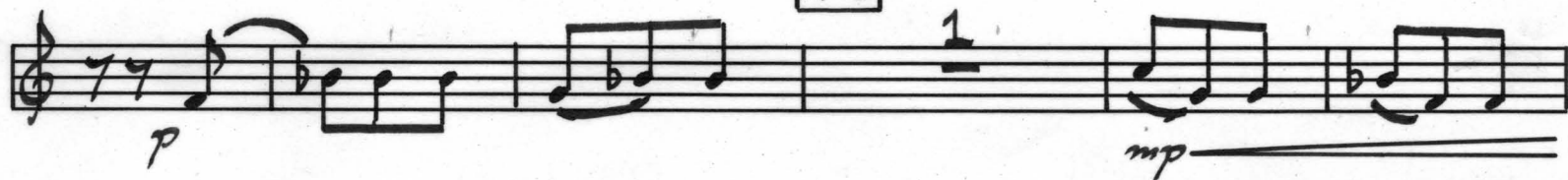
p

160

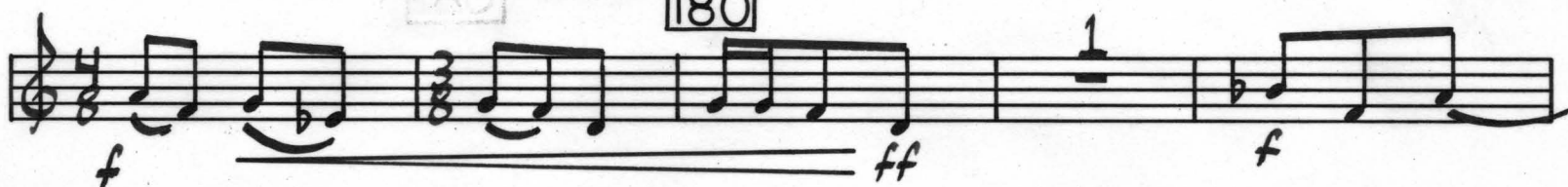
p

TRUMPET

170



180



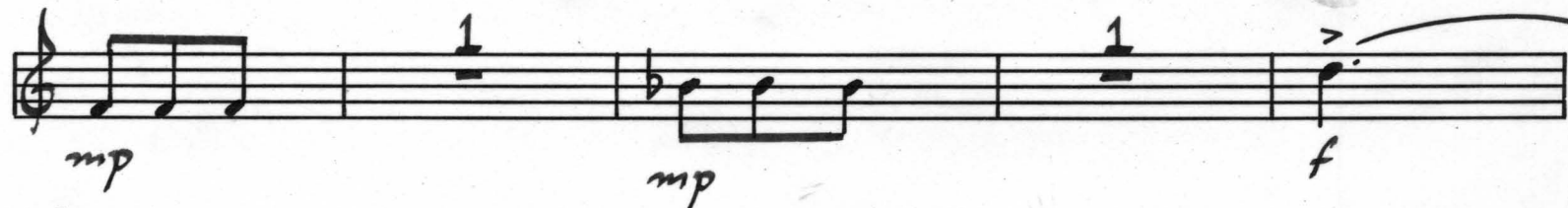
190



200



210



TRUMPET

220

Two staves of musical notation for measures 220-230. The first staff contains measures 220-225, and the second staff contains measures 225-230. Dynamics include *mf* and *f*.

230

Staff of musical notation for measures 230-240. Measure 230 includes a 7-measure rest. Measure 235 includes a 4-measure rest and the instruction *(F HRN.)*. Dynamics include *f* and *mp*.

240

Two staves of musical notation for measures 240-250. The first staff contains measures 240-245, and the second staff contains measures 245-250. Dynamics include *mf* and *f*.

250

Two staves of musical notation for measures 250-260. The first staff contains measures 250-255, and the second staff contains measures 255-260. Dynamics include *f*.

260

Two staves of musical notation for measures 260-270. The first staff contains measures 260-265, and the second staff contains measures 265-270. Dynamics include *f* and *ff*. Measure 265 includes a 1-measure rest.

270

Staff of musical notation for measures 270-275. Measures 270-275 include accents and dynamics *sfz* and *fff*. Measure 275 includes a 7-measure rest.