

WALTER ROSS

Brass Trio No. 2

B \flat Trumpet

1986

BRASS TRIO Nº 2

WALTER ROSS

I
INTRADA

(FESTIVO $\text{♩} = 120$)

B♭ TRUMPET

1 2 3 4 5 6 7 8 9 10 11 12 13 14 15 16 17 18 19 20 21 22 23 24 25 26 27 28 29 30

f *mf* *cresc.* *f*

A

TRUMPET

Musical score for Trumpet, measures 31 through 73. The score is written on a single staff in treble clef. Measure numbers are indicated above the notes. Dynamics include *f* (forte), *mp* (mezzo-piano), *mf* (mezzo-forte), *f* (forte), *pp* (pianissimo), and *cresc.* (crescendo). Section markers B, C, D, and E are circled. Measure 38 is marked with a circled B and a first ending bracket. Measure 47 is marked with a circled C and a second ending bracket. Measure 54 is marked with a circled D and a first ending bracket. Measure 63 is marked with a circled E. The score includes various musical notations such as slurs, ties, and articulation marks.

TRUMPET

74 *Poco RIT.* 75 76 *(F)* *(A TEMPO)* 78 79

80 81 82 83 *mf*

84 85 86 87

88 *(G)* 89 *p* 90 *mf* 91 *#*

92 *(H)* 93 94 *f* 95

96 97 98 99 *mf cresc.*

100 101 102 103 *f*

104 105 *(I)* 106 107

108 109 110 111

112 113 *ff* 114 115

II. ROMANZA

(GRAZIOSO $\text{♩} = 96$)

TRUMPET

1 2 3 4 5 6 7 8 9 10 11 12 13 14 15 16 17 18 19 20 21 22 23 24 25 26 27 28 29 30 31 32

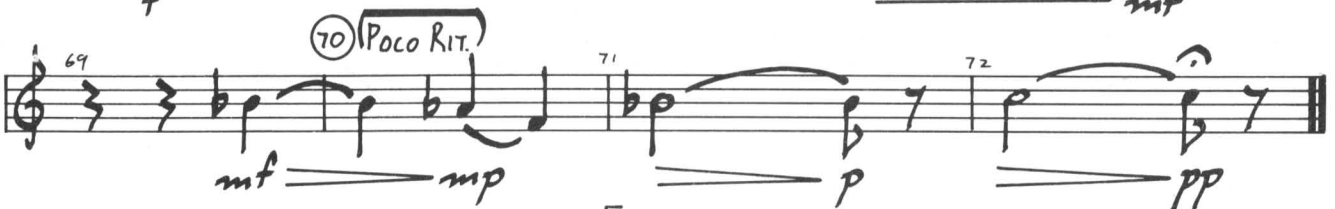
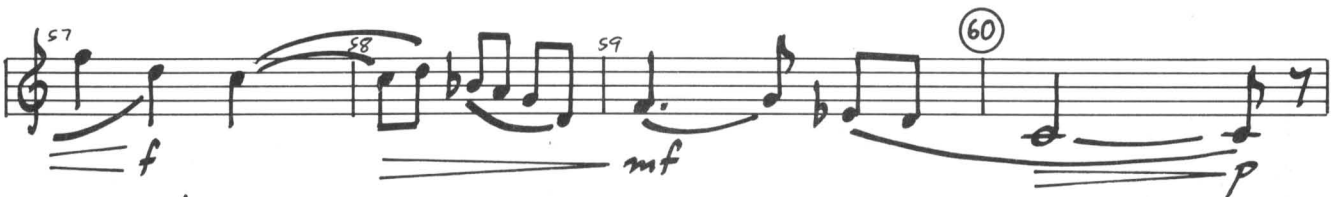
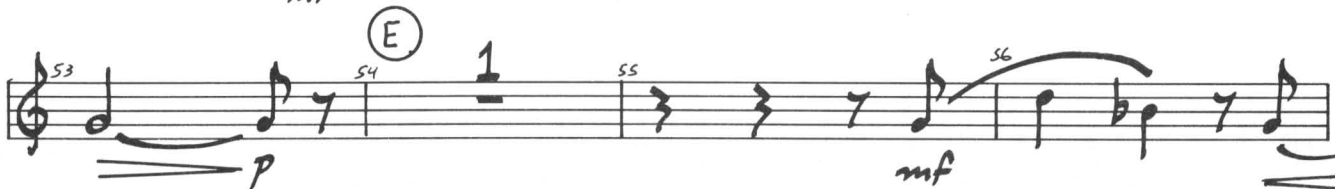
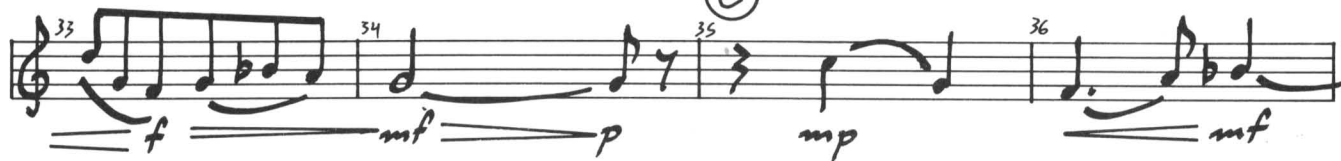
mf *p* *f* *p* *mf* *mp* *mf* *p* *mf*

A B

4

TRUMPET

(C)



III. DANZA

(ANIMATO $\text{♩} = 144$)

TRUMPET

(A)

mf

10

11

12

13

14

f

15

16

17

18

19

mf

20

21

22

f

23

24

25

26

3

27

mf

(B)

30

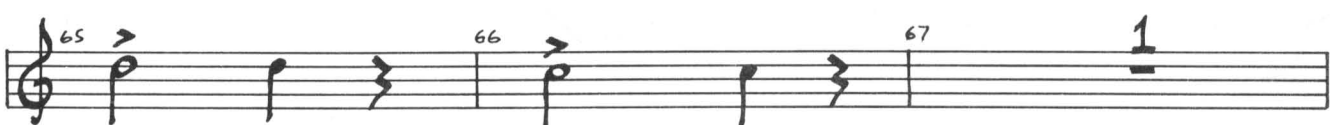
31

32

p

(CAPRICCIOSO)

TRUMPET



TRUMPET

Musical score for Trumpet, measures 68 to 135. The score is written on a single staff with a treble clef and a key signature of one sharp (F#). The tempo/mood is marked *Capriccioso* at measures 80 and 104. The dynamics range from *mf* (mezzo-forte) to *ff* (fortissimo).

Key features of the score include:

- Measures 68-73:** Starts with a *mf* dynamic. Measure 70 is circled.
- Measures 74-78:** Measure 76 is circled. Dynamics include *f* (forte).
- Measures 79-84:** Measure 80 is circled. The tempo/mood is marked *Capriccioso*. Measure 83 is marked *sub. p* (subito piano).
- Measures 85-89:** Dynamics include *mf*.
- Measures 90-98:** Measure 90 is circled. Measure 94 has a 4-measure rest. Dynamics include *p* (piano) and *mf*.
- Measures 99-103:** Measure 100 is circled. Measure 102 has a 4-measure rest. Dynamics include *f*.
- Measures 104-109:** Measure 104 is circled. The tempo/mood is marked *Capriccioso*. Dynamics include *p* and *mp* (mezzo-piano).
- Measures 110-114:** Measure 110 is circled. Dynamics include *mf*.
- Measures 115-120:** Measure 118 is circled. Measure 118 has a 1-measure rest. Measure 120 is circled. Dynamics include *p* and *f*.
- Measures 121-125:** Dynamics include *f*.
- Measures 126-129:** Measure 130 is circled. Dynamics include *f*.
- Measures 131-135:** Measure 132 is marked *ff*. The piece ends with a double bar line at measure 135.

IV. PASTORALE

(SOAVE J.=60)

TRUMPET

1 2 3 4

5 6 7 8 9

10 11 12 13 14 15

16 17 18 19 20 21 22

23 24 25 26 27 28 29 30 31 32 33 34

35 36 37 38 39 40 41 42 43 44 45

mp mf p

(A)

(MUTE)

(B)

(MUTE)

(OPEN)

(C)

(D)

mf p mp mf p f

mp mf p mp

mf mp p

mf mp p

V. FINALE

(ENERGICO $\text{♩} = 120$)

TRUMPET

(A)

8 9 10 11

p

12 13 14 15 16

mf

17 18 19 20 1

f

(B)

21 22 23 24 25

mp *f*

26 27 28 29

30 31 32 33 34 4

(C)

38 39 40 41

p

42 43 44 45 46

TRUMPET

47 48 2 50 1 51 *mf*

52 53 54 55 56 *f*

57 58 59 60

61 62 63 64 65

66 67 68 69 *mf* *mp*

70 (E) 71 72 73 74 *p*

75 76 77 78

79 80 81 82 83

84 85 86 87

88 89 1 90 (F) (SCHERZANDO) 91 92 *pp*

93 94 95 96

97 98 99 1 100 1

TRUMPET

Handwritten musical score for Trumpet, measures 101 to 150. The score is written on ten staves in 2/4 time. Measure numbers are written above the notes. Dynamic markings include *mf*, *f*, *mp*, *p*, and *ff*. Rehearsal marks are circled and labeled: 6, 110, I, 120, 130, J, 140. A first ending bracket is present in measure 101. A second ending bracket is present in measures 148-150.

101 1 102 103 104
mf

105 106 107 108 109

110 111 112 113
f

114 5 119 I 120 121 122
mp *mf*

123 124 125 126 127
f

128 129 130 131
mf *f*

132 133 134 135 136 J
mf *p*

137 138 139 140 141
mp *mf*

142 143 144 145
f

146 147 148 149 150
ff