

BRASS TRIO N^o1

FOR

C TRUMPET, F HORN, TROMBONE

C Trumpet

WALTER ROSS

BRASS TRIO №1

WALTER ROSS

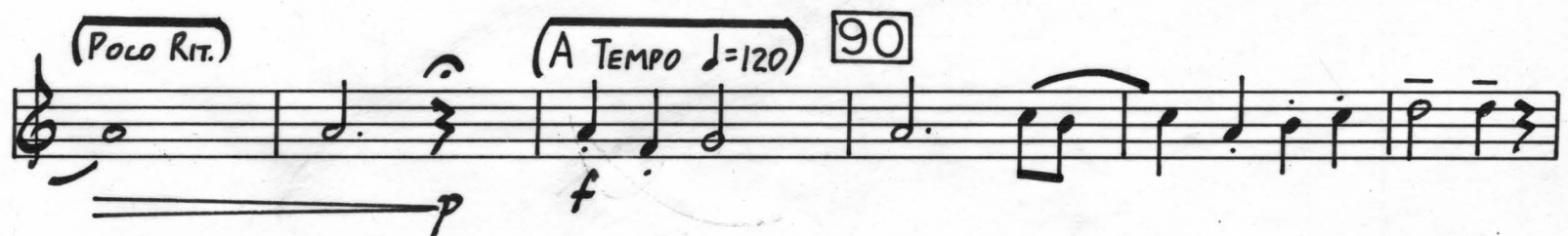
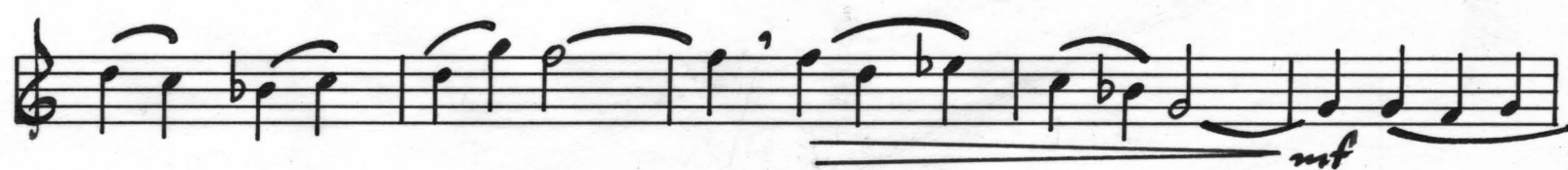
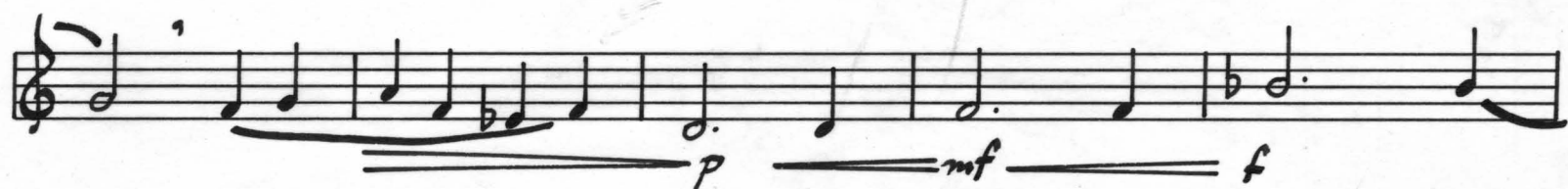
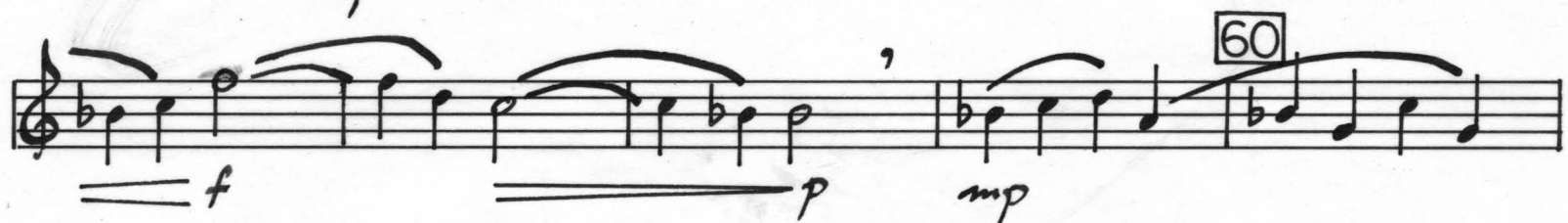
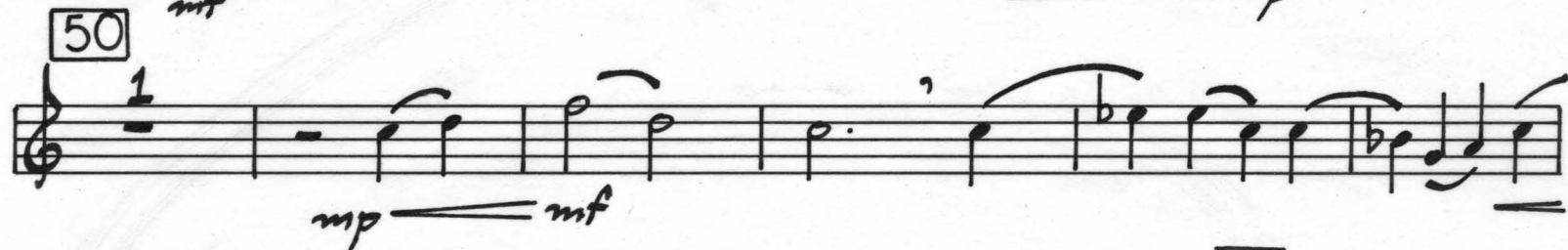
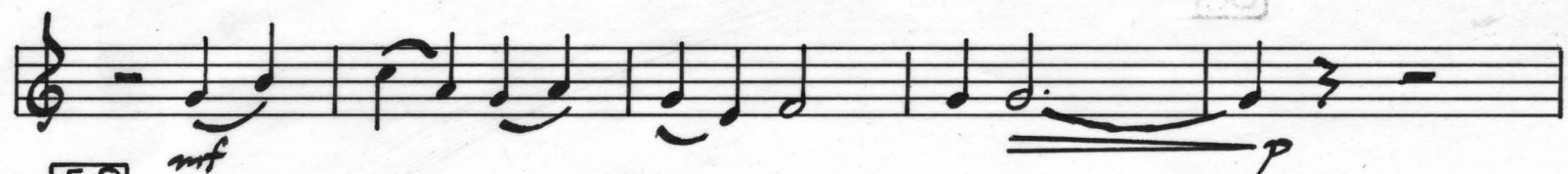
I. INTRADA

(VIVACE $d=120$)

C TRUMPET

The musical score for the C Trumpet part consists of eight staves of music. The first staff begins with a treble clef, a common time signature (C), and a key signature of one flat (B-flat). The first measure is marked with a *mf* dynamic. The second staff contains measures 7-10, with dynamics *f*, *mf*, *f*, and *sf*. The third staff contains measures 11-14, with dynamics *mp*, *mf*, *mp*, and *mf*. The fourth staff contains measures 15-18, with a *f* dynamic. The fifth staff contains measures 19-22, with a *f* dynamic. The sixth staff contains measures 23-26, with a *f* dynamic. The seventh staff contains measures 27-30, with a *p* dynamic. The eighth staff contains measures 31-34, with a *dim.* dynamic, and ends with a *pp* dynamic. Rehearsal marks are placed at the beginning of the second, third, sixth, and eighth staves, labeled 10, 20, 30, and 40 respectively. The score includes various musical notations such as notes, rests, beams, slurs, and dynamic markings.

TRUMPET



TRUMPET

100

110

120

130

140

150

f *p* *mf* *f* *mp* *ff*

II. CANZONETTA

C TRUMPET

MODERATO $\text{♩} = 108$ **(LYRICO)**

10

20

30 **(MUTE)** **3** **(MUTE)** **(LEGGIERO POLO SCHERZANDO)**

40

mf **f** **mf** **f** **mp** **mf** **f** **mf** **mp** **p** **mf** **decresc.** **mp** **f** **mf**

TRUMPET

50

First two staves of music for the Trumpet part, measures 50-51. The notation includes eighth and sixteenth notes, rests, and dynamic markings.

(OPEN)

60

TROMBONE
(8VA LOWER)

Staff 3, measures 60-61. Includes a four-measure rest and dynamic markings.

(LYRICO)

Staff 4, measures 62-63. Features a slur over two measures with dynamic markings *p* and *f*.

Staff 5, measures 64-65. Continues the melodic line with various note values and slurs.

70

Staff 6, measures 70-71. Includes dynamic markings *mf* and *ff*.

Staff 7, measures 72-73. Continues the melodic line with dynamic markings *f* and *mf*.

80

Staff 8, measures 80-81. Includes a three-measure rest and dynamic markings *mp* and *p*.

Staff 9, measures 82-83. Continues the melodic line with dynamic marking *mf*.

Staff 10, measures 84-85. Final staff on the page, ending with a double bar line.

III. CAPRICCIO

(FESTIVO J.: 96)

C TRUMPET

f

sub p *mf* *f*

10

f

20

30

mf *f*

2

TRUMPET

40

p *mf*

mf

50

f *ff* *sub. p*

60

mf cresc. *f*

(CANTABILE)

mp

70

p *mf*

f *ff*

80

f *mf* *p*

(POLO ACCEL.)

TRUMPET

(J. = 108)

First staff of music. Starts with a *p* (piano) dynamic. Ends with a *cresc.....* (crescendo) marking.

90

Second staff of music. Includes *mf* (mezzo-forte) and *f* (forte) dynamics.

Third staff of music.

100

Fourth staff of music. Includes a first ending bracket and a *mf* dynamic.

Fifth staff of music. Starts with a *f* dynamic.

110

Sixth staff of music. Includes a first ending bracket and *mf* dynamics.

Seventh staff of music. Includes a *f* dynamic and a *mf* dynamic.

120

Eighth staff of music. Includes *f* dynamics.

130

Ninth staff of music. Ends with a *ff* (fortissimo) dynamic.

Tenth staff of music. Ends with a *fff* (fortississimo) dynamic.